

SHOP NOTE:
TOE DIRECTION NEAR SIDE

ONE BEAM 38B1

M	6x3 1/16
F	1 15/16 x 5 1/16
K	13 1/16 x 9 1/16

BILL OF MATERIAL

Total weight : 30

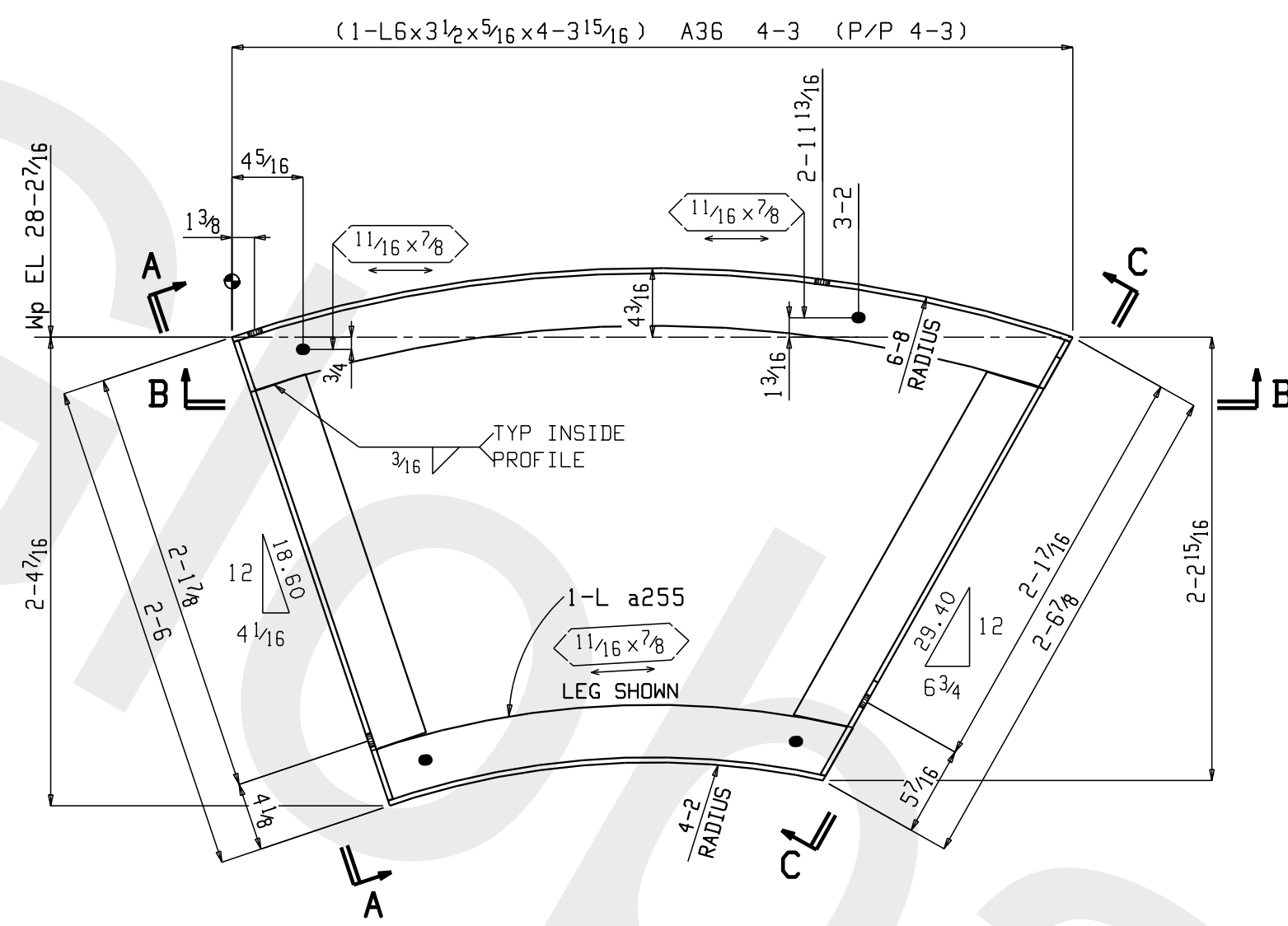
QTY	PC MARK	DESCRIPTION	LENGTH	REMARKS
ONE	38B1	BEAM		
1	38B1	C6x8.2	2 11 9/16	A36
1	a2	L3x2x3/8	1 0	A36
		FIELD BOLTS		
4		7/8 Dia A325N	0 2	1HD WASH

CUSTOMER: TESORO CORPORATION			
PROJECT: GOLDEN EAGLE REFINERY			
LOCATION: 150 SOLANO WAY, MARTINEZ, CA 94553			
DRAWN BY:	MC	CHECKED BY:	GDI
		SEQUENCE:	-
1	MC	Dec 8 2011	FOR FABRICATION
0	MC	Nov 23 2011	FOR APPROVAL
REV	BY	DATE	DESCRIPTION
OPEN HOLES: 13/16 DIA UNLESS OTHERWISE NOTED			
MIN. EDGE DISTANCE: 1 1/4 UNLESS OTHERWISE NOTED			
SHOP PAINT: SSPC-SP6 & HOT DIPPED GALVANIZED			
WELDS: PER AWS D1.1 (E70xx ELECTRODES)			

DELTA
STEEL ERECTORS
325 WEST CHANNEL RD
BENICIA, CA 94510
707-748-2221

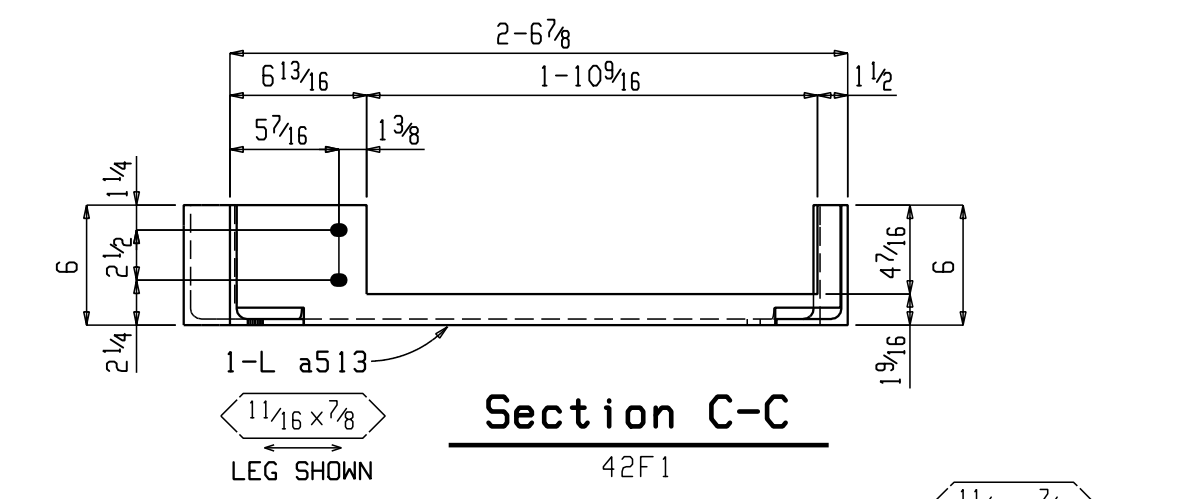
Contractor's License No. 277816

JOB NO.	DRAWING	REV.
3165-9	38B1	1

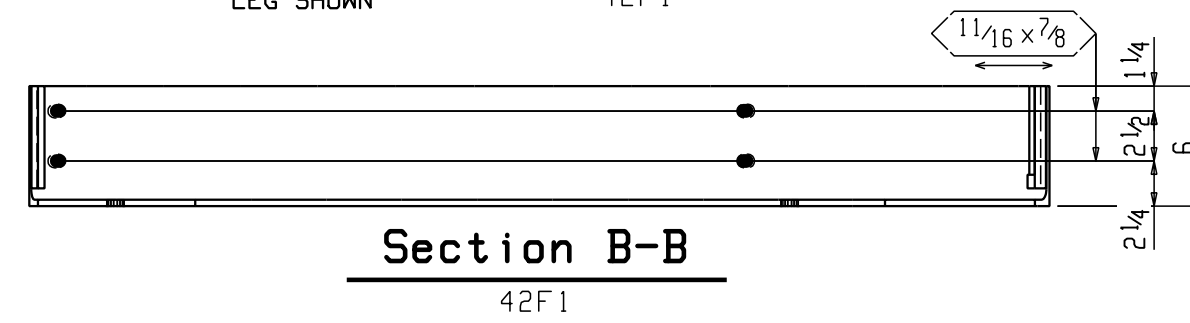


ONE LANDING FRAME 42F1

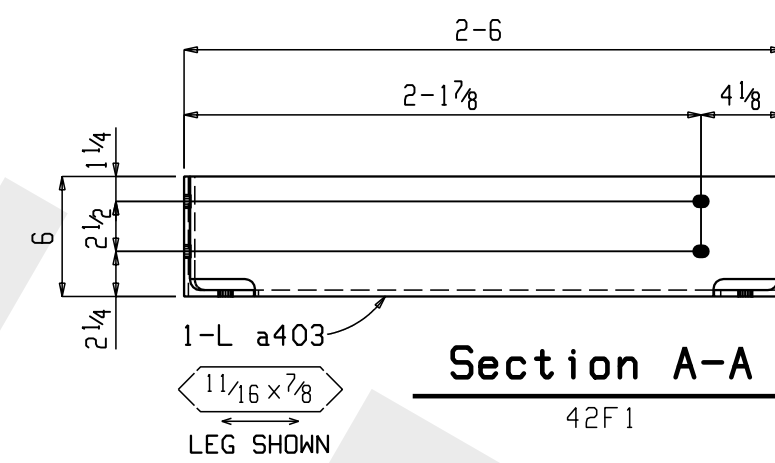
SHOP NOTE:
TOE DIRECTION NEAR SIDE



Section C-C
42F1



Section B-B
42F1




Section A-A
42F1

BILL OF MATERIAL Total weight : 115

QTY	PC	DESCRIPTION	LENGTH	REMARKS
TOTAL	42F1	LANDING FRAME		
1	42F1	L6x3 1/2x5/16	4	3'5 1/16 A36
1	a513	L6x3 1/2x5/16	2	6'3 1/16 B1E A36
1	a403	L6x3 1/2x5/16	2	5'3 3/8 B1E A36
1	a255	L6x3 1/2x5/16	2	4'3 3/4 A36
		FIELD BOLTS		
2		5/8 Dia A325N	0	2HD, 1BVL WASH

CUSTOMER: TESORO CORPORATION			
PROJECT: GOLDEN EAGLE REFINERY			
LOCATION: 150 SOLANO WAY, MARTINEZ, CA 94553			
DRAWN BY:	MC	CHECKED BY:	GDI
SEQUENCE:		-	
1	MC	Dec 8 2011	FOR FABRICATION
0	MC	Nov 23 2011	FOR APPROVAL
REV	BY	DATE	DESCRIPTION
OPEN HOLES: 1 3/16 DIA UNLESS OTHERWISE NOTED			
MIN. EDGE DISTANCE: 1 1/4 UNLESS OTHERWISE NOTED			
SHOP PAINT: SSPC-SP6 & HOT DIPPED GALVANIZED			
HELDS: PER AWS D1.1 (E70xx ELECTRODES)			



DELTA
STEEL ERECTORS
325 WEST CHANNEL RD
BENICIA, CA 94510
707-748-2221

Contractor's License No. 277816

JOB NO.	DRAWING	REV.
3165-9	42F1	1

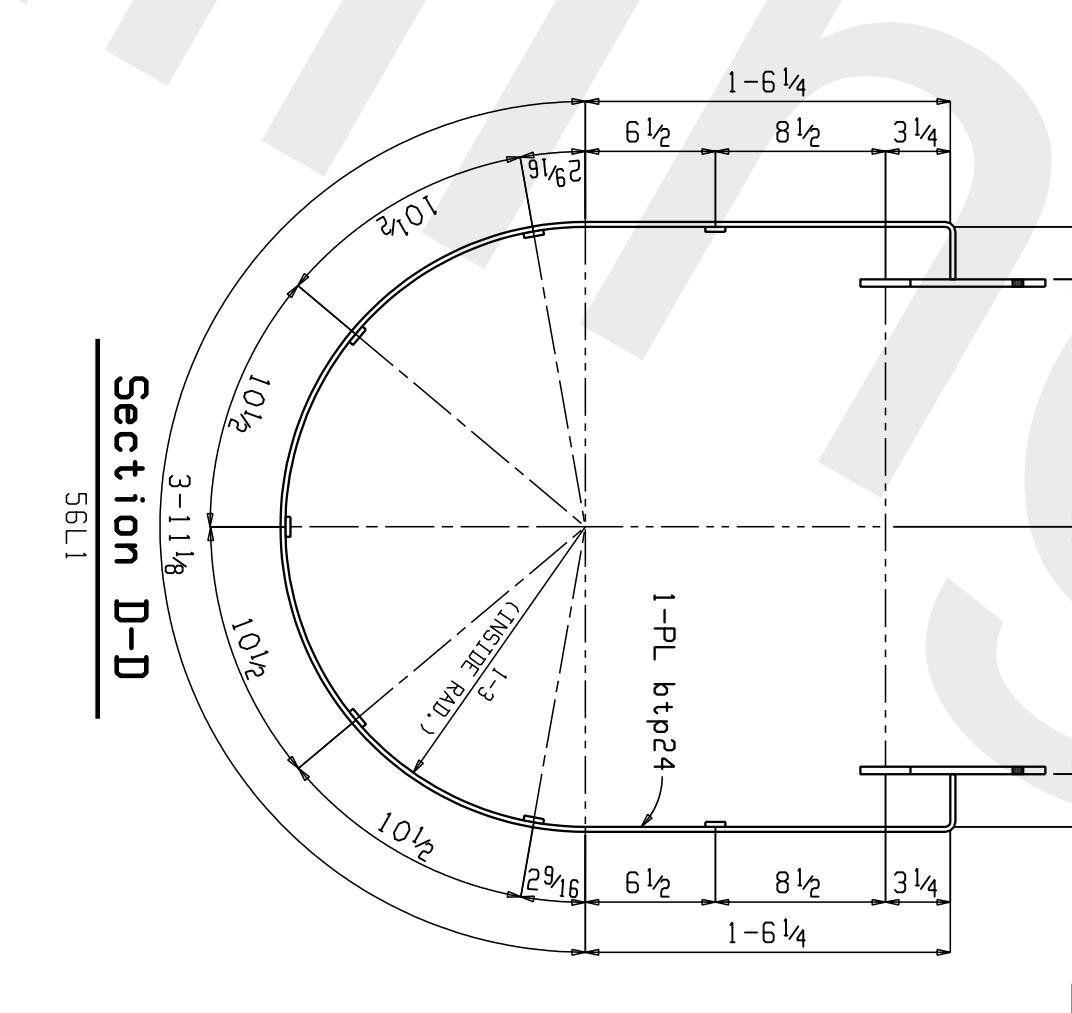
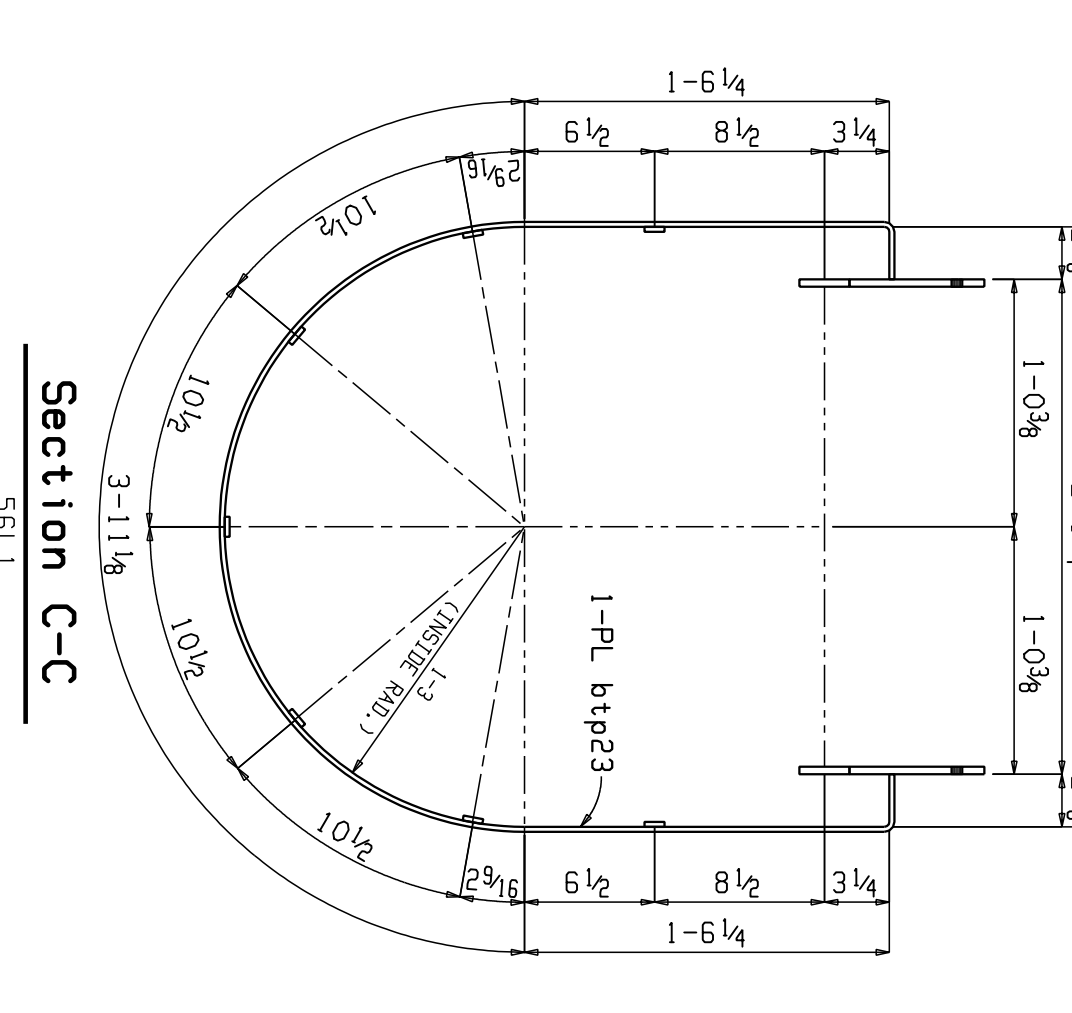
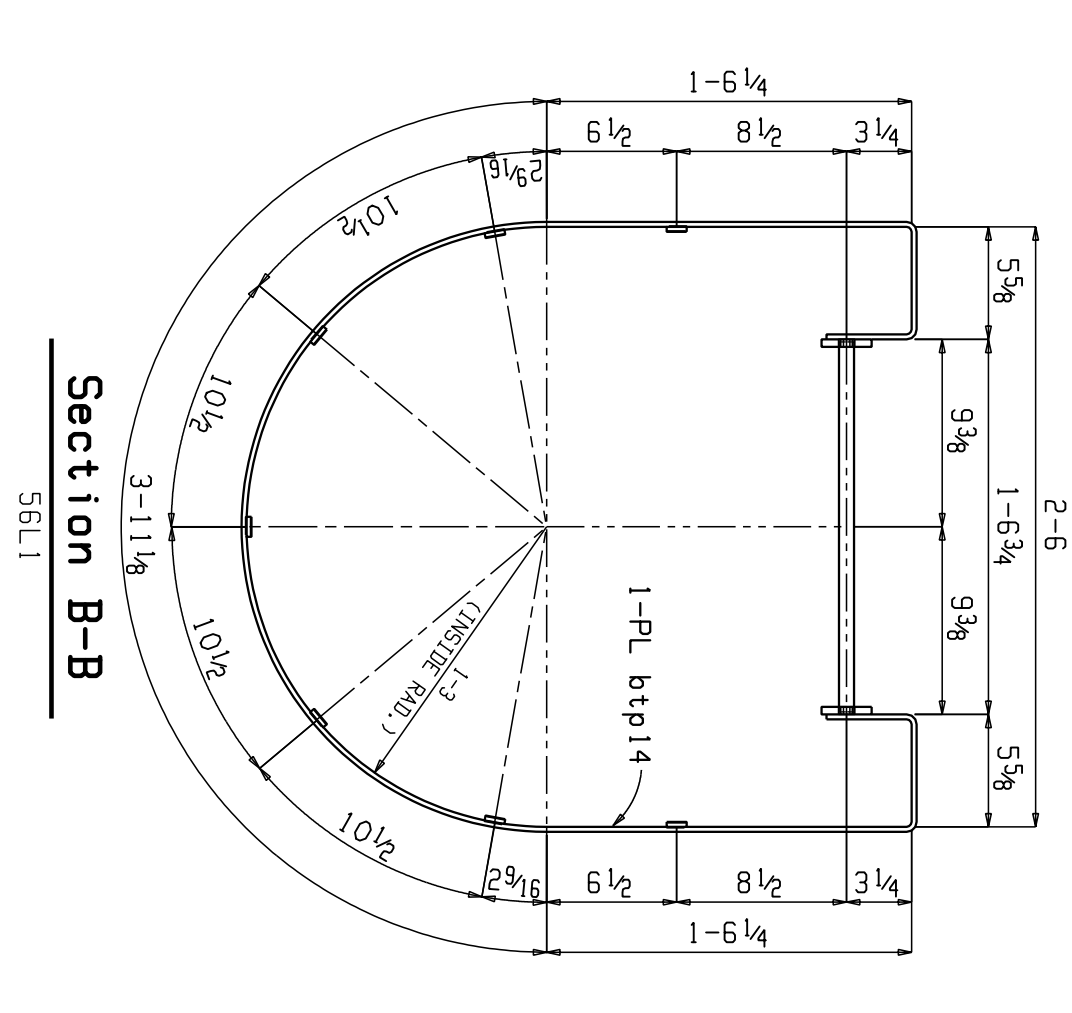
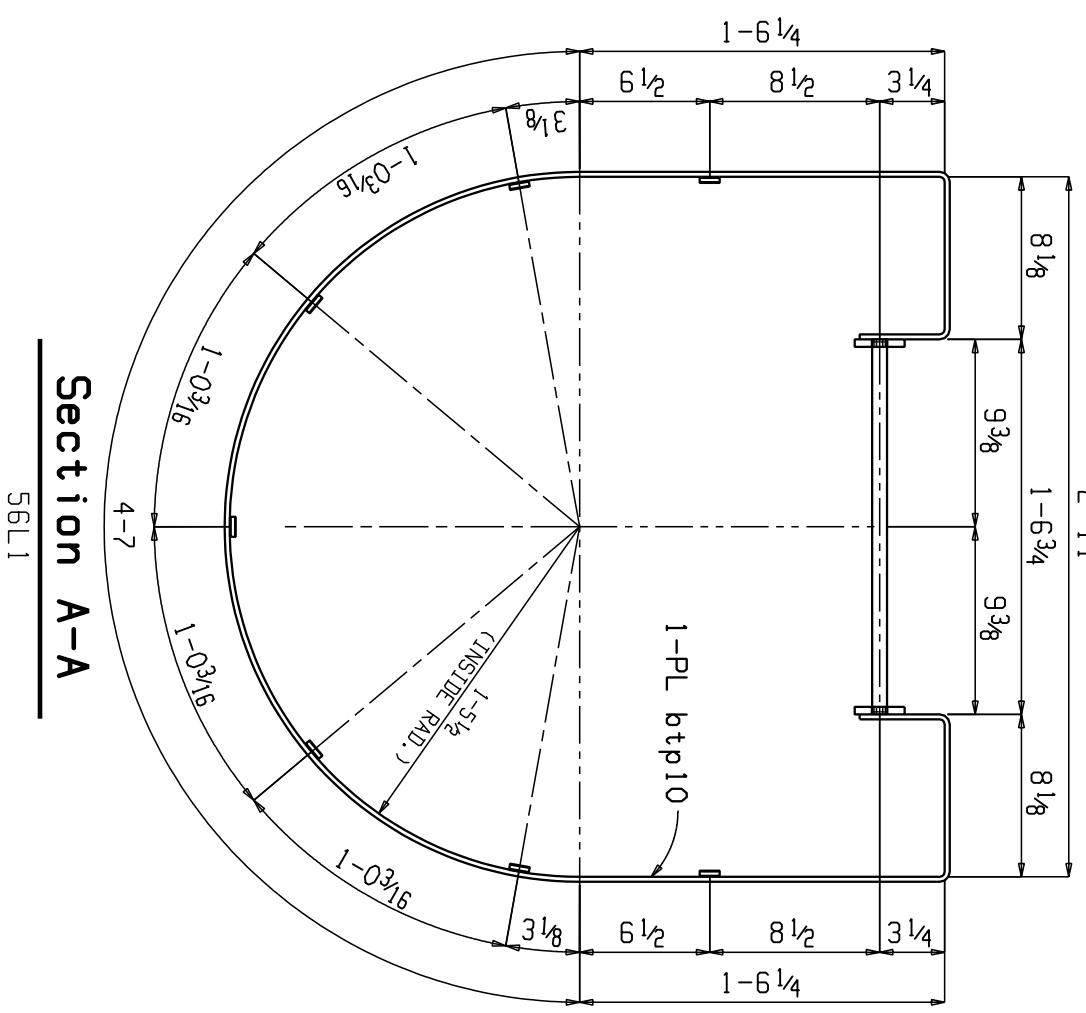
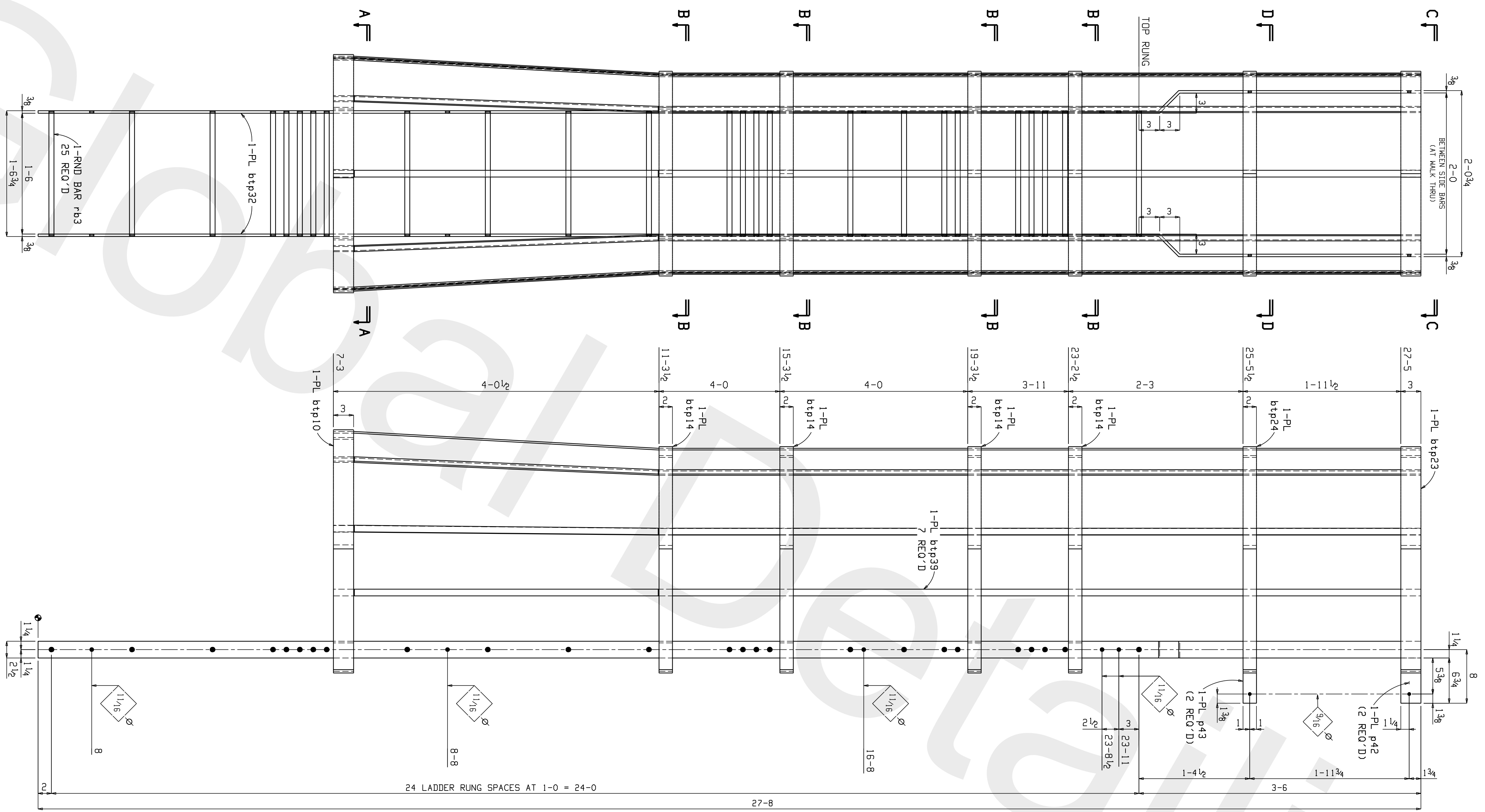
Detailing, Inc.

BILL OF MATERIAL

Total weight : 479

QTY	PC	DESCRIPTION	LENGTH	REMARKS
ONE	56L1	LADDER		
1	56L1	#6 REBAR	1 6 1/2	A36
2	p42	FB 3/8 x 3	0 6 3/4	A36
2	bt p32	FB 3/8 x 2 1/2	27 9 1/4	BENT A36
2	p43	FB 3/8 x 2	0 6 3/4	A36
1	bt p10	FB 1/4 x 3	9 8 1/16	BENT A36
1	bt p23	FB 1/4 x 3	7 5 7/16	BENT A36
4	bt p14	FB 1/4 x 2	8 7 9/16	BENT A36
1	bt p24	FB 1/4 x 2	7 5 7/16	BENT A36
7	bt p39	FB 1/4 x 1	20 5 1/16	BENT A36
24	r63	#6 REBAR	1 6 1/2	A36
FIELD BOLTS				
10		5/8 Dia A325N	0 1 3/4	1HD WASH
2		1/2 Dia A325N	0 1 1/2	1HD WASH

ONE LADDER 56L1



CUSTOMER: TESORO CORPORATION			
PROJECT: GOLDEN EAGLE REFINERY			
LOCATION: 150 SOLANO WAY, MARTINEZ, CA 94553			
DRAWN BY: MC	CHECKED BY: GDI	SEQUENCE: -	
1	MC	Dec 8 2011	FOR FABRICATION
0	MC	Nov 23 2011	FOR APPROVAL
REV	BY	DATE	DESCRIPTION
OPEN HOLES: 1 3/16 DIA UNLESS OTHERWISE NOTED			
MIN. EDGE DISTANCE: 1 1/4 UNLESS OTHERWISE NOTED			
SHOP PAINT: SSPC-SP6 & HOT DIPPED GALVANIZED			
HELDS: PER AWS D1.1 (E70xx ELECTRODES)			

DELTA
STEEL ERECTORS
325 WEST CHANNEL RD
BENICIA, CA 94510
707-748-2221

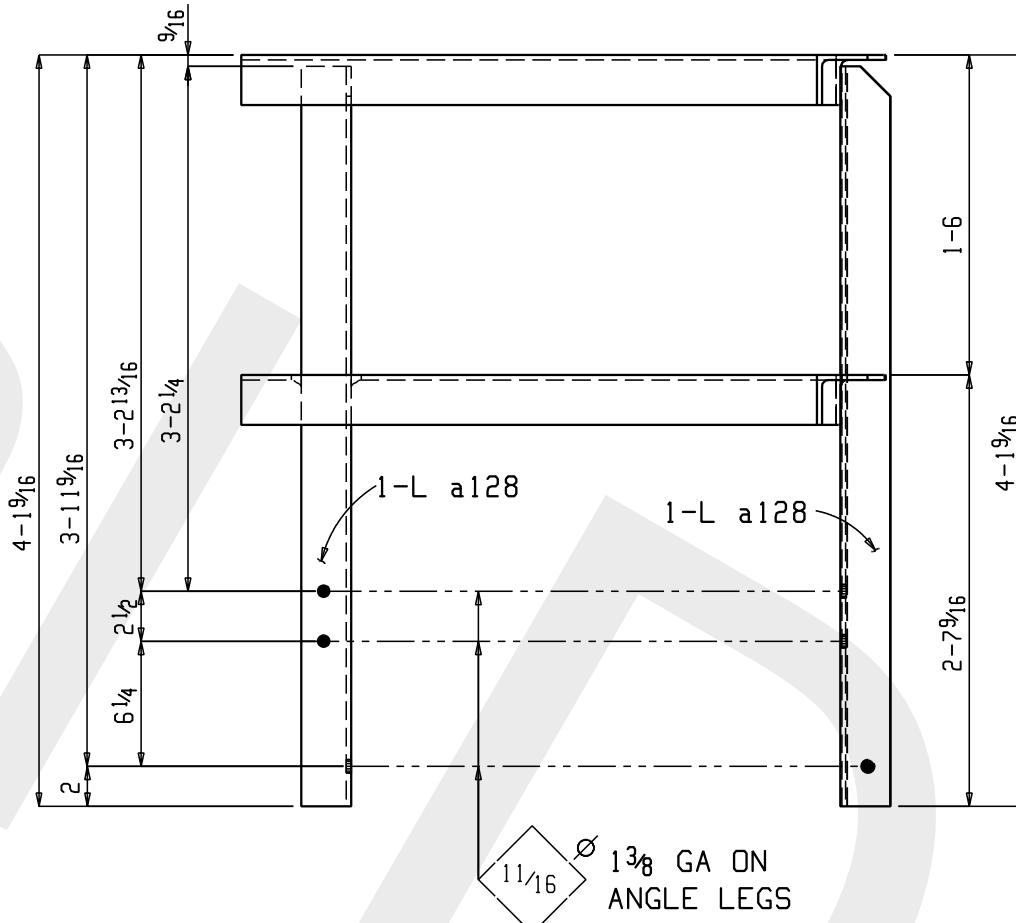
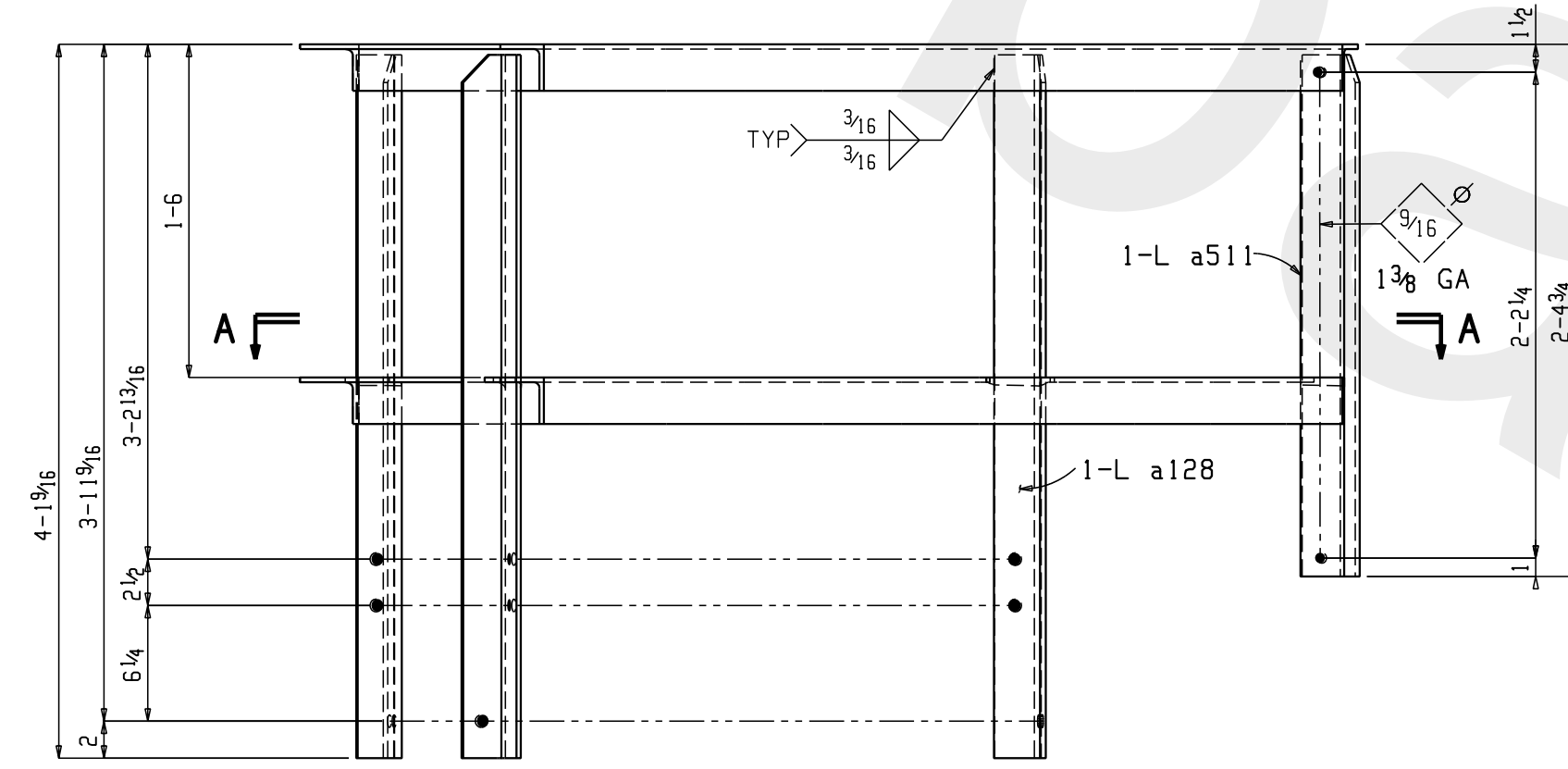
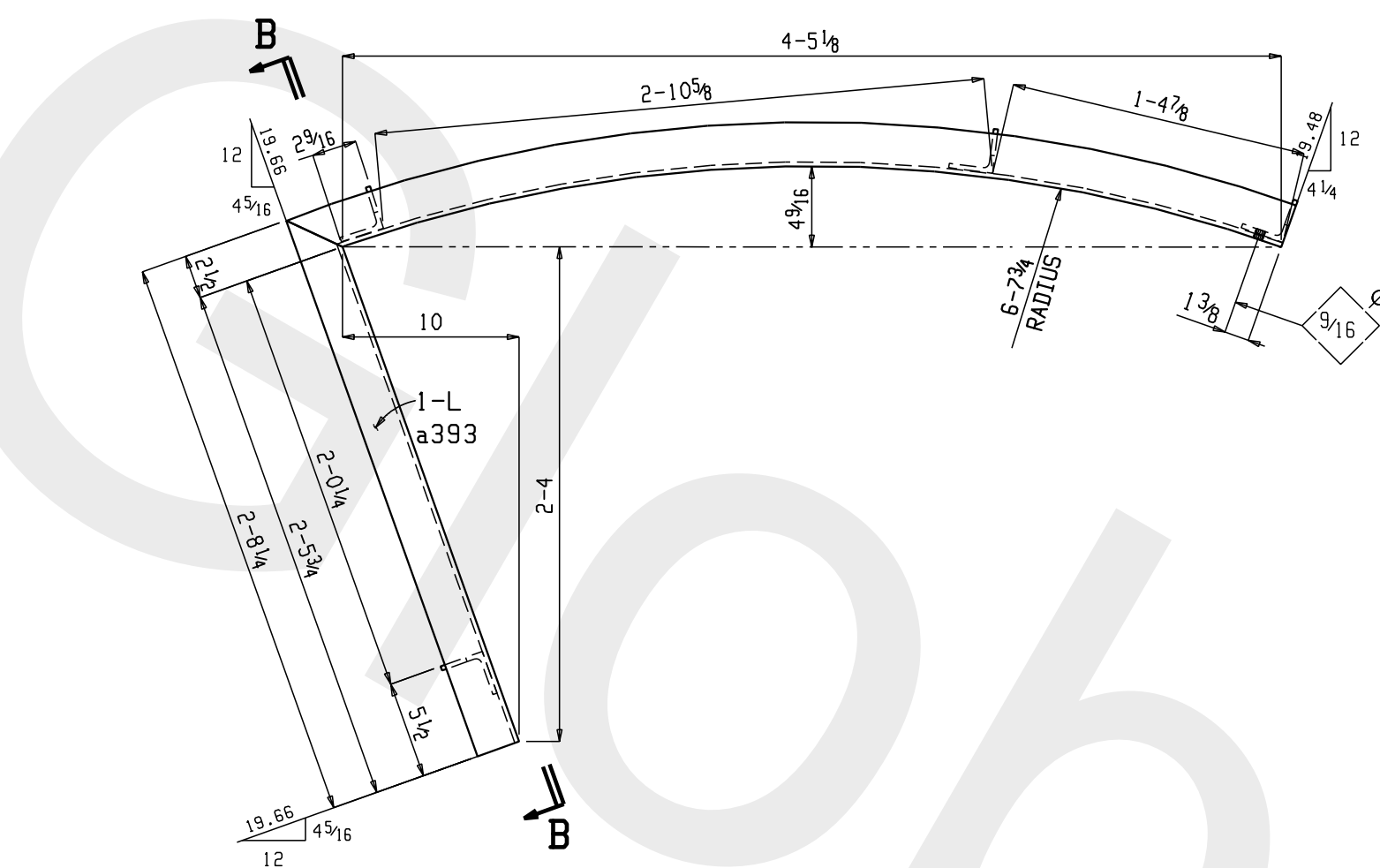
Contractor's License No. 277816

JOB NO.	DRAWING	REV.
3165-9	56L1	1

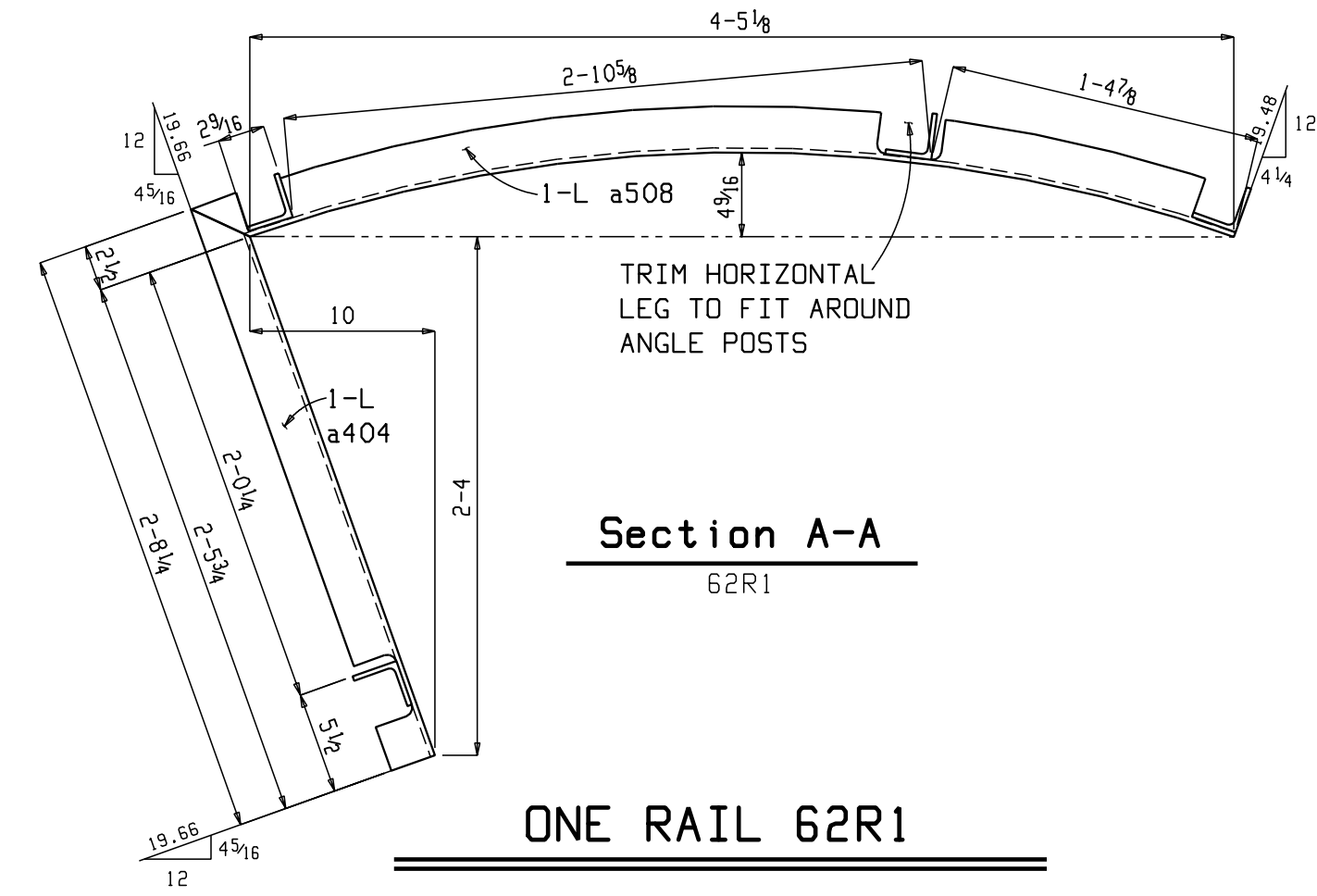
PLOT FILE: 061_08_2012_A1_03151227.PLT

BILL OF MATERIAL Total weight : 122

QTY	PC	DESCRIPTION	LENGTH	REMARKS
TOTAL	62R1	RAIL		
ONE	62R1	RAIL		
1	62R1	L2 1/2 x 2 1/2 x 1/4	4 10 3/8	A36
1	a508	L2 1/2 x 2 1/2 x 1/4	4 10 3/8	A36
3	a128	L2 1/2 x 2 1/2 x 1/4	4 1	A36
1	a393	L2 1/2 x 2 1/2 x 1/4	2 8 1/4	A36
1	a404	L2 1/2 x 2 1/2 x 1/4	2 8 1/4	A36
1	a511	L2 1/2 x 2 1/2 x 1/4	2 4 3/8	A36
		FIELD BOLTS		
7	5/8 Dia A325N		0 1 3/4	2HD WASH
2	5/8 Dia A325N		0 1 1/2	2HD WASH



Section B-B
62R1



Section A-A
62R1

ONE RAIL 62R1

CUSTOMER: TESORO CORPORATION			
PROJECT: GOLDEN EAGLE REFINERY			
LOCATION: 150 SOLANO WAY, MARTINEZ, CA 94553			
DRAWN BY:	MC	CHECKED BY:	GDI
SEQUENCE: -			
1	MC	Dec 8 2011	FOR FABRICATION
0	MC	Nov 23 2011	FOR APPROVAL
REV	BY	DATE	DESCRIPTION
OPEN HOLES: 1 3/16 DIA UNLESS OTHERWISE NOTED			
MIN. EDGE DISTANCE: 1 1/4 UNLESS OTHERWISE NOTED			
SHOP PAINT: SSPC-SP6 & HOT DIPPED GALVANIZED			
HELDS: PER AWS D1.1 (E70xx ELECTRODES)			

DELTA
STEEL ERECTORS
325 WEST CHANNEL RD
BENICIA, CA 94510
707-748-2221

Contractor's License No. 277816

JOB NO.	DRAWING	REV.
3165-9	62R1	1

PL01125: 04.08.2012: A1: 03151332.PIC