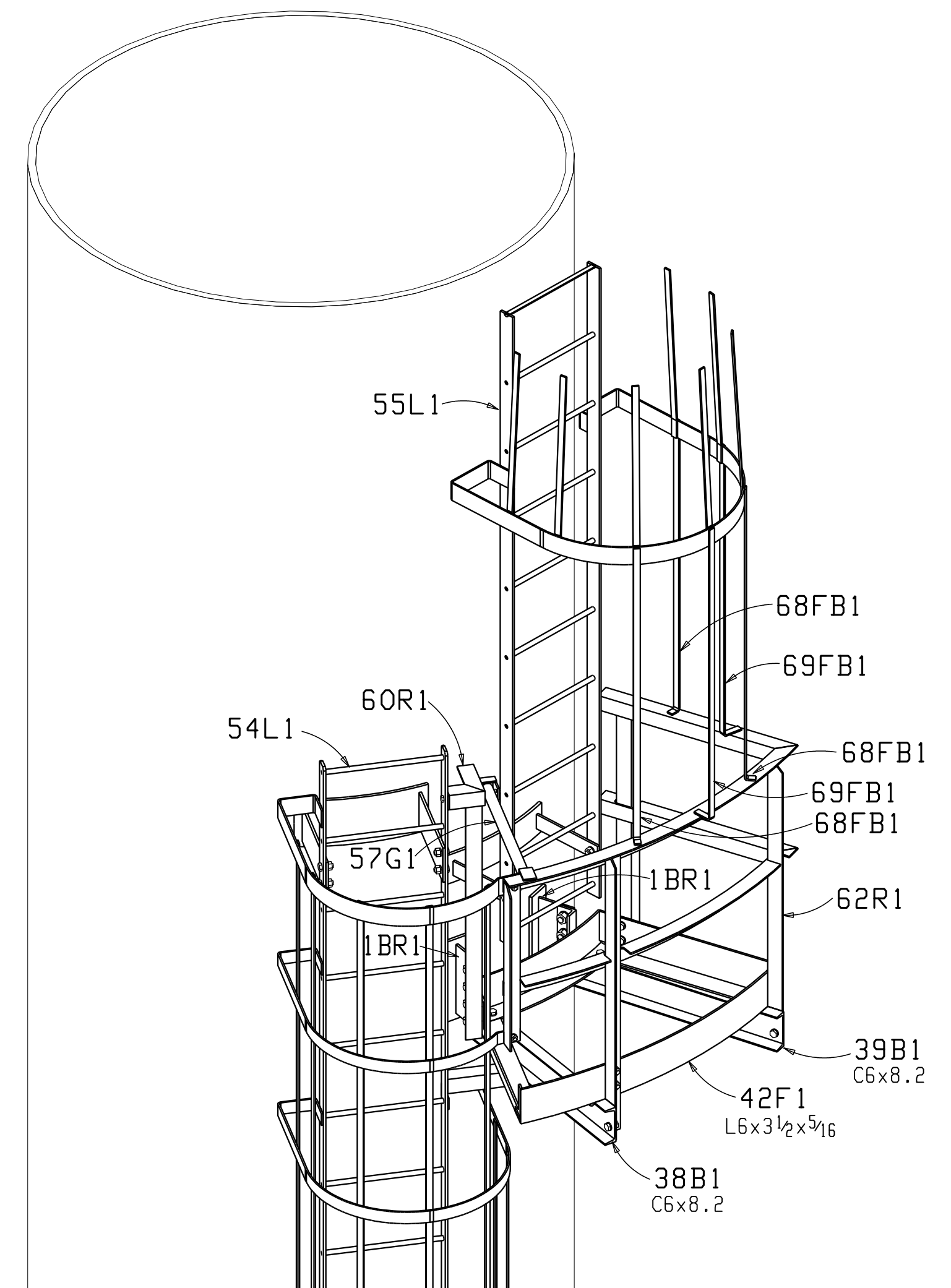
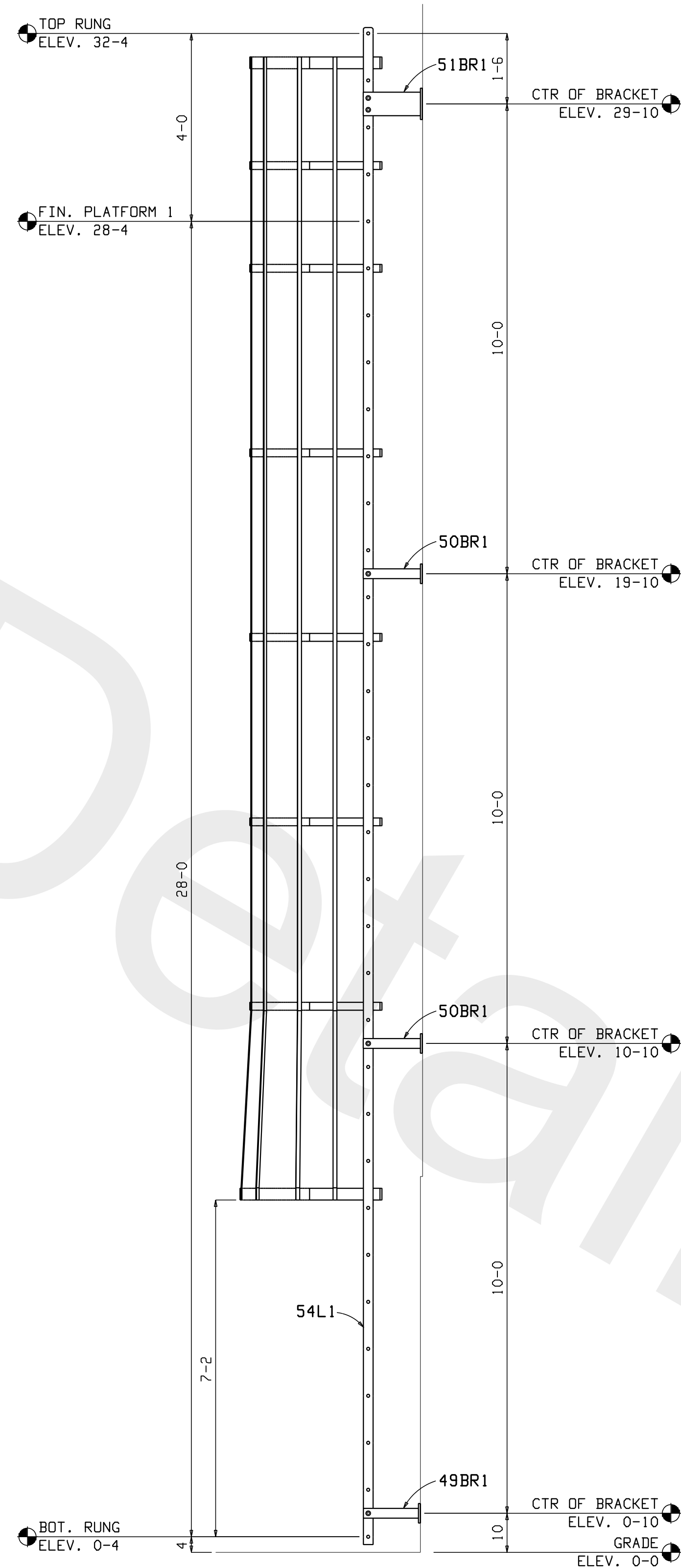


PLAN OF PLATFORM 1

- 1) TOP OF FINISH PLATFORM: ELEV 28-4
- 2) TOP OF CHANNEL SUPPORTS: ELEV. 28-2⁷/₁₆



ISOMETRIC VIEW OF PLATFORM 1

REF: -

CUSTOMER: TESORO CORPORATION			
PROJECT: GOLDEN EAGLE REFINERY			
LOCATION: 150 SOLANO WAY, MARTINEZ, CA 94553			
DRAWN BY:	MC	CHECKED BY:	-
SEQUENCE:	-		
1	MC	Dec 8 2011	FOR FABRICATION
0	MC	Nov 23 2011	FOR APPROVAL
REV	BY	DATE	DESCRIPTION
OPEN HOLES: 1 ³ / ₁₆ DIA UNLESS OTHERWISE NOTED			
MIN. EDGE DISTANCE: 1 ¹ / ₄ UNLESS OTHERWISE NOTED			
SHOP PAINT: SSPC-SP6 & HOT DIPPED GALVANIZED			
HELDS: PER AWS D1.1 (E70xx ELECTRODES)			

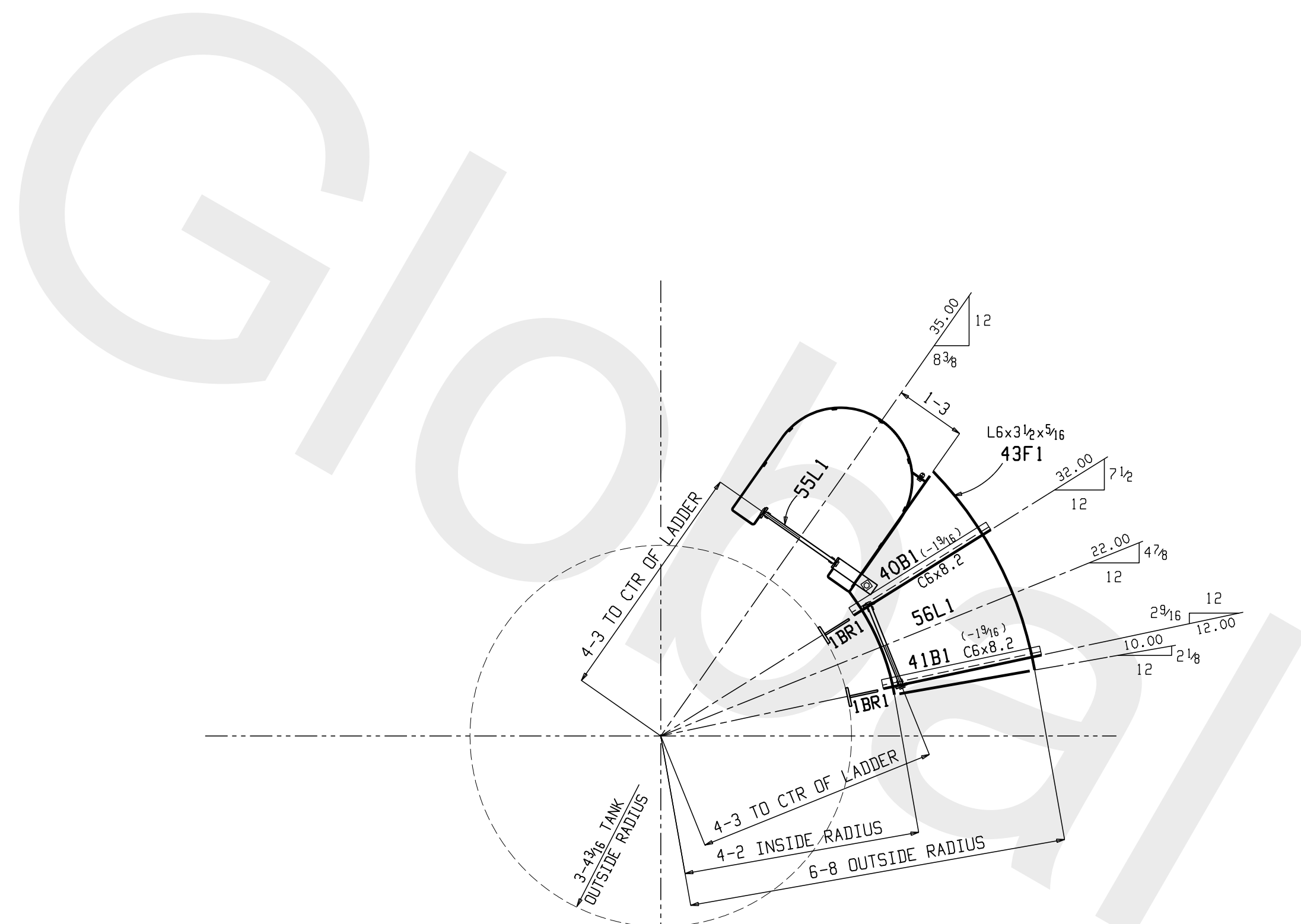
TANK C-4 - PLATFORM 1

DELTA
STEEL ERECTORS
325 WEST CHANNEL RD
BENICIA, CA 94510
707-748-2221

Contractor's License No. 277816

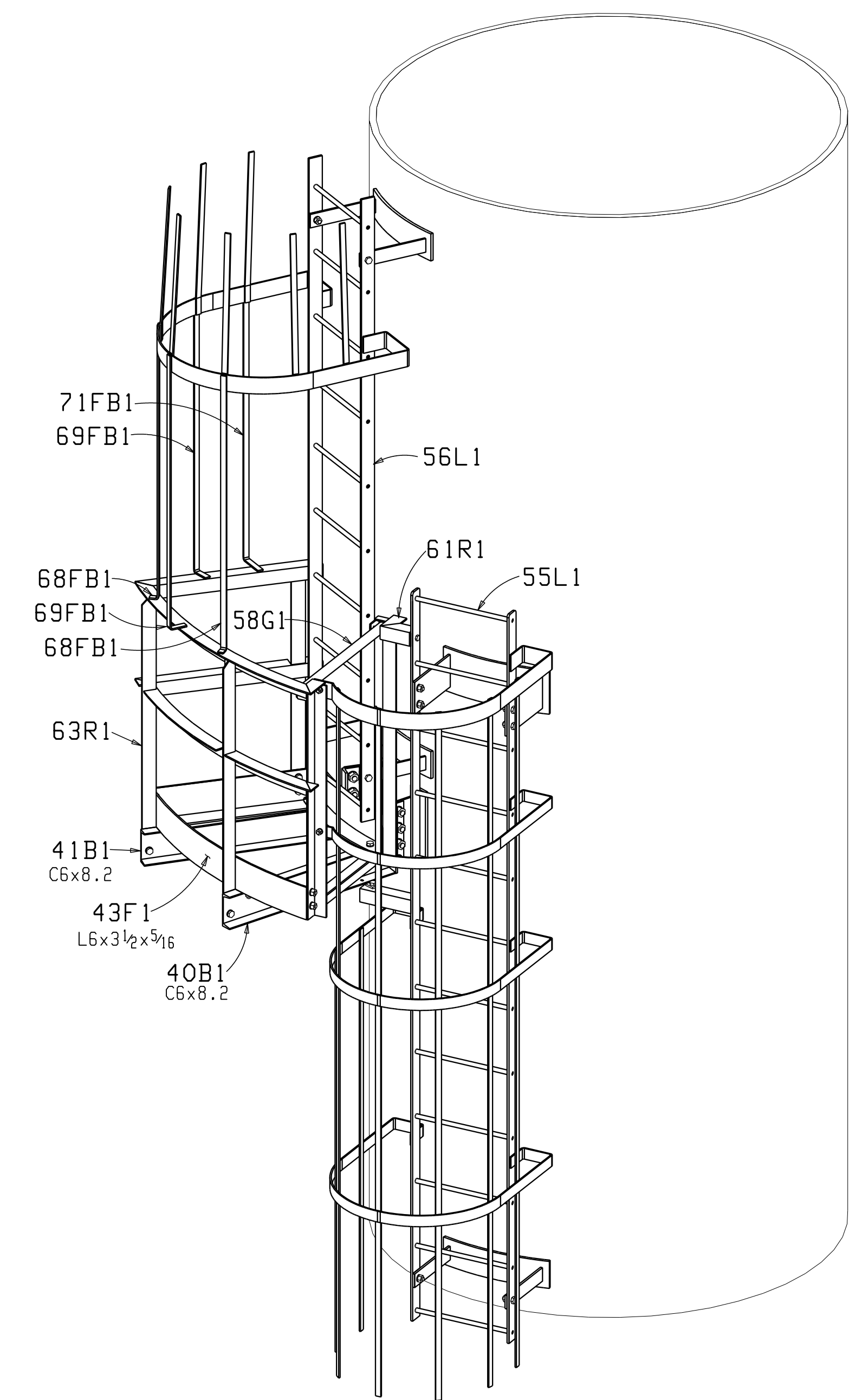
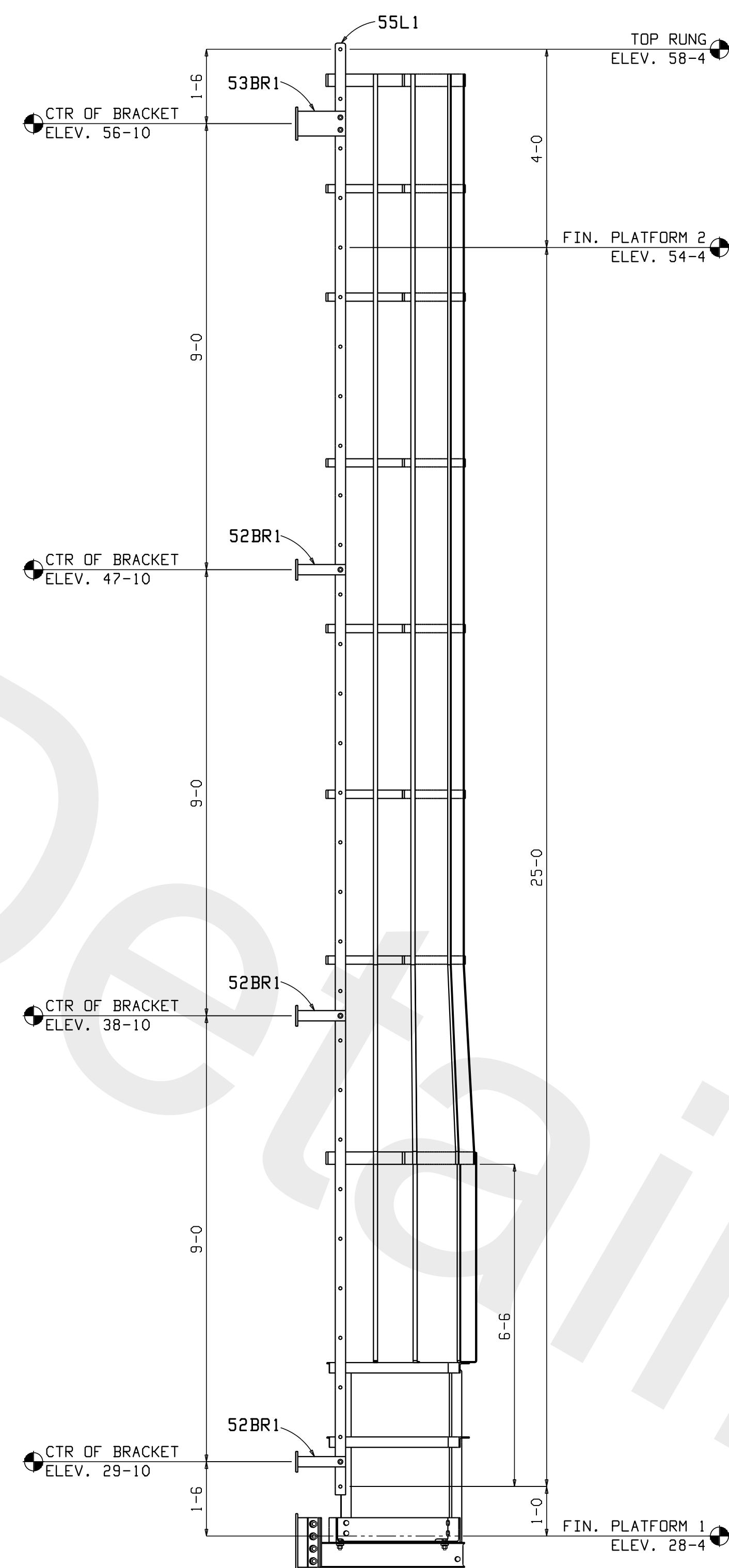
JOB NO.	DRAWING	REV.
3165-9	E4	1

PLOT DATE: 01/08/2012 11:03:15:33:PR



PLAN OF PLATFORM 2

- 1) TOP OF FINISH PLATFORM: ELEV 54-4
- 2) TOP OF CHANNEL SUPPORTS: ELEV. 54-27₁₆



ISOMETRIC VIEW OF PLATFORM 2

REF: -

CUSTOMER: TESORO CORPORATION			
PROJECT: GOLDEN EAGLE REFINERY			
LOCATION: 150 SOLANO WAY, MARTINEZ, CA 94553			
DRAWN BY: MC	CHECKED BY: -	SEQUENCE: -	
1	MC	Dec 8 2011	FOR FABRICATION
0	MC	Nov 23 2011	FOR APPROVAL
REV	BY	DATE	DESCRIPTION
OPEN HOLES: 1 3/16 DIA UNLESS OTHERWISE NOTED			
MIN. EDGE DISTANCE: 1 1/4 UNLESS OTHERWISE NOTED			
SHOP PAINT: SSPC-SP6 & HOT DIPPED GALVANIZED			
HELDS: PER AWS D1.1 (E70xx ELECTRODES)			

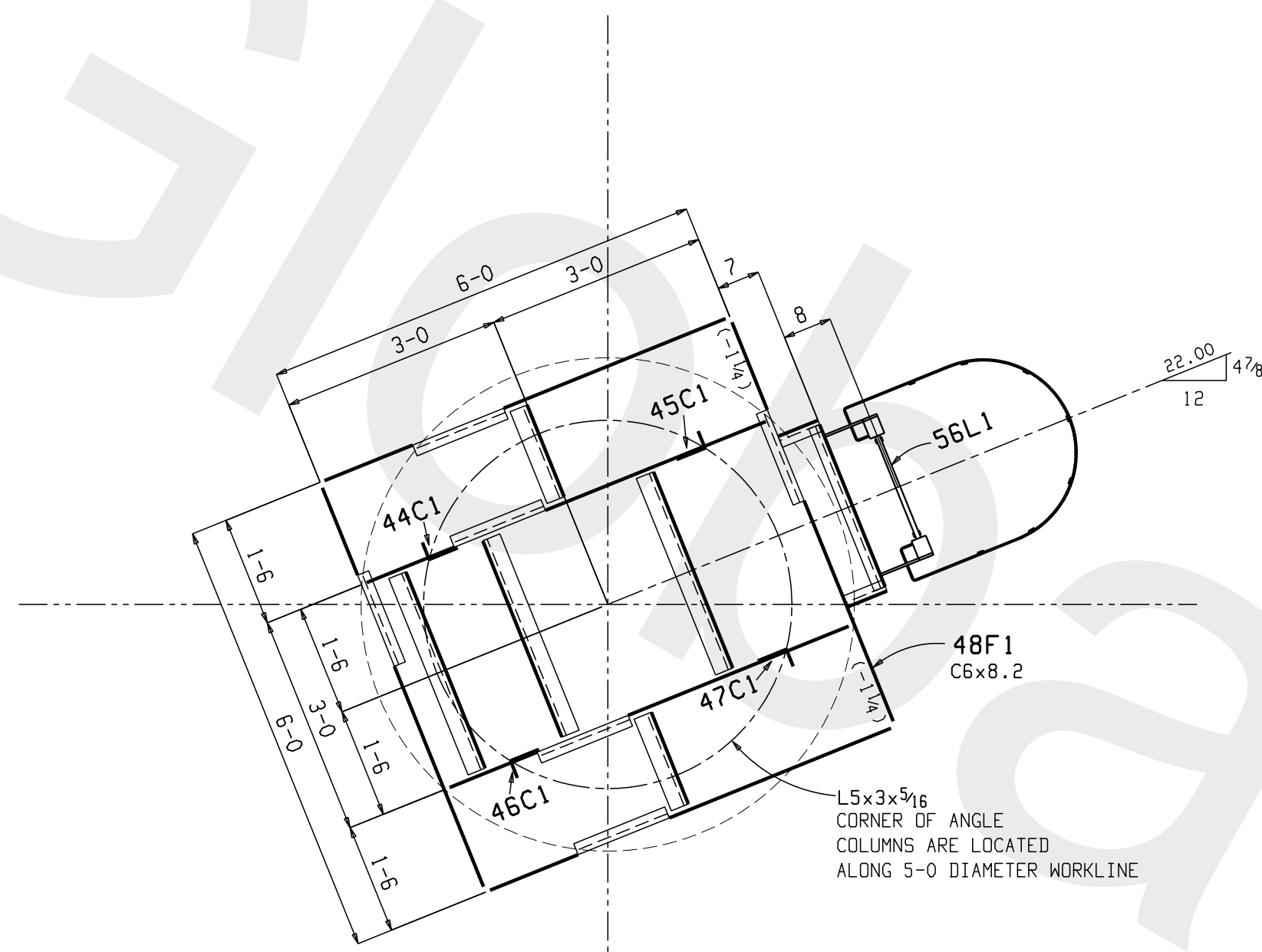
TANK C-4 - PLATFORM 2

DELTA
STEEL ERECTORS
325 WEST CHANNEL RD
BENICIA, CA 94510
707-748-2221

Contractor's License No. 277816

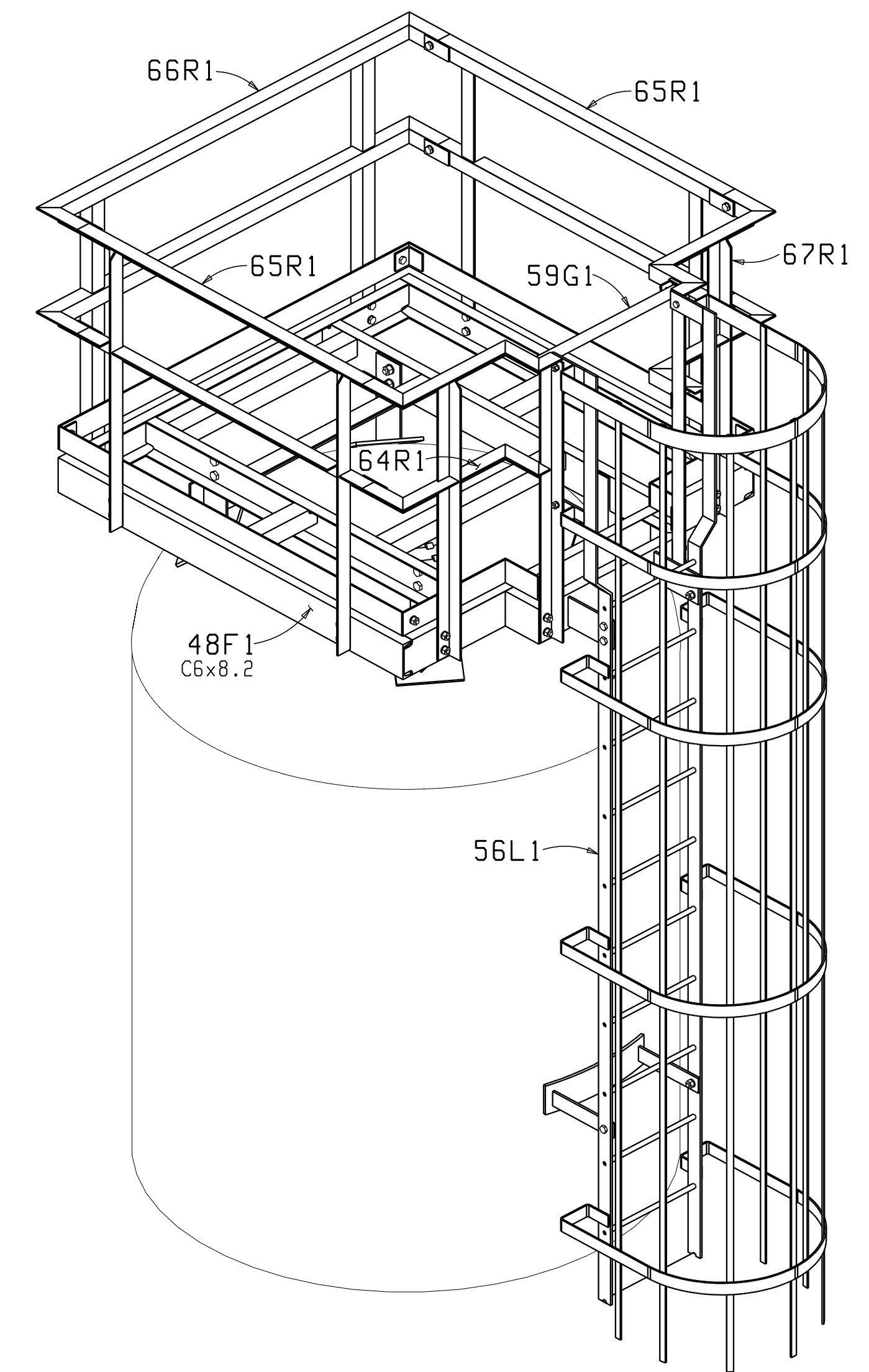
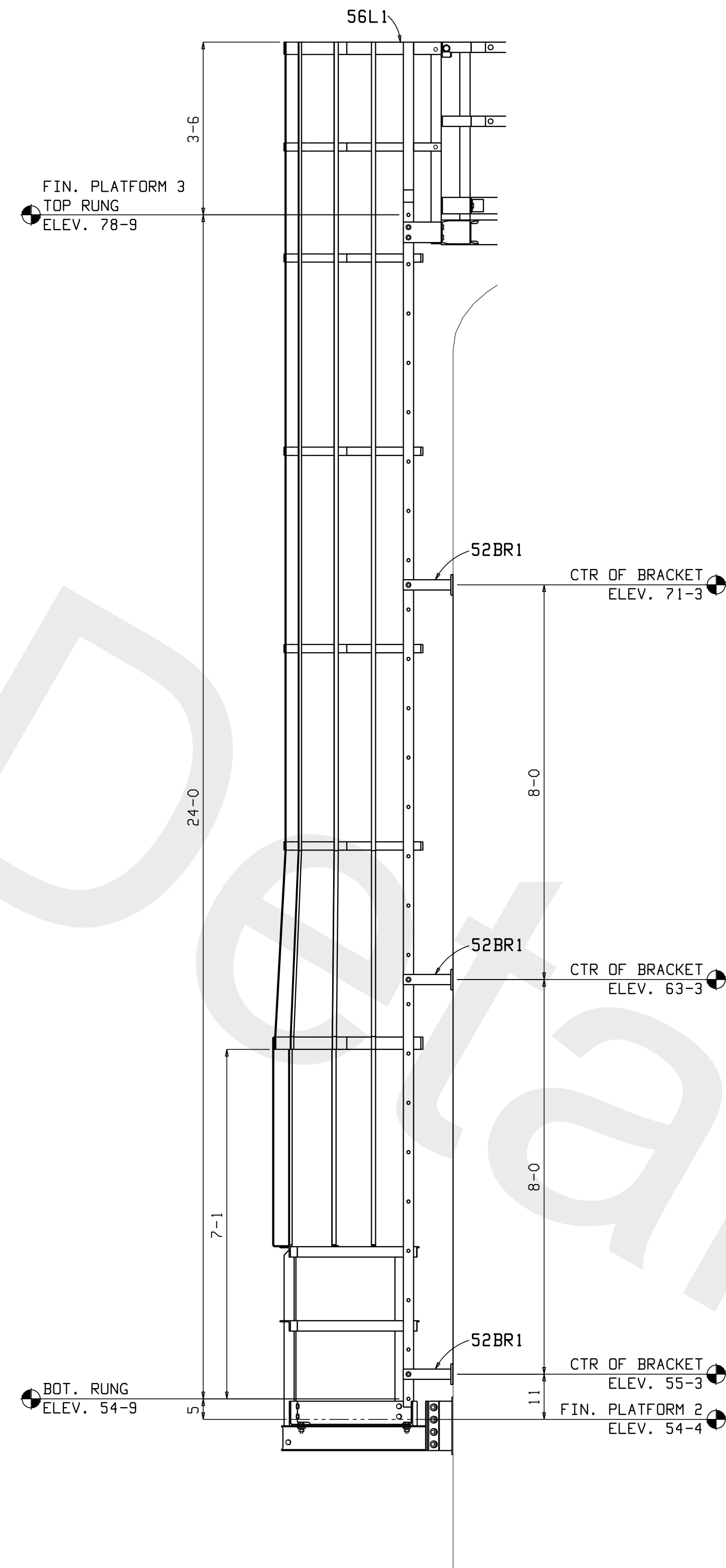
JOB NO.	DRAWING	REV.
3165-9	E5	1

PLOT DATE: 06/28/2012 11:03:15 AM



PLAN OF PLATFORM 3

- 1) TOP OF FINISH PLATFORM: ELEV 78-9
- 2) TOP OF CHANNEL FRAME: ELEV. 77-7³/₄



ISOMETRIC VIEW OF PLATFORM 3

REF: -

CUSTOMER: TESORO CORPORATION			
PROJECT: GOLDEN EAGLE REFINERY			
LOCATION: 150 SOLANO WAY, MARTINEZ, CA 94553			
DRAWN BY:	MC	CHECKED BY:	-
SEQUENCE:	-		
1	MC	Dec 8 2011	FOR FABRICATION
0	MC	Nov 23 2011	FOR APPROVAL
REV	BY	DATE	DESCRIPTION
OPEN HOLES: 1 ³ / ₈ DIA UNLESS OTHERWISE NOTED			
MIN. EDGE DISTANCE: 1 ¹ / ₄ UNLESS OTHERWISE NOTED			
SHOP PAINT: SSPC-SP6 & HOT DIPPED GALVANIZED			
HELDS: PER AWS D1.1 (E70xx ELECTRODES)			

TANK C-4 - PLATFORM 3

DELTA
STEEL ERECTORS
 325 WEST CHANNEL RD
 BENICIA, CA 94510
 707-748-2221

Contractor's License No. 277816

JOB NO.	DRAWING	REV.
3165-9	E6	1

PLOT DATE: 06/28/2012 11:03:15 AM