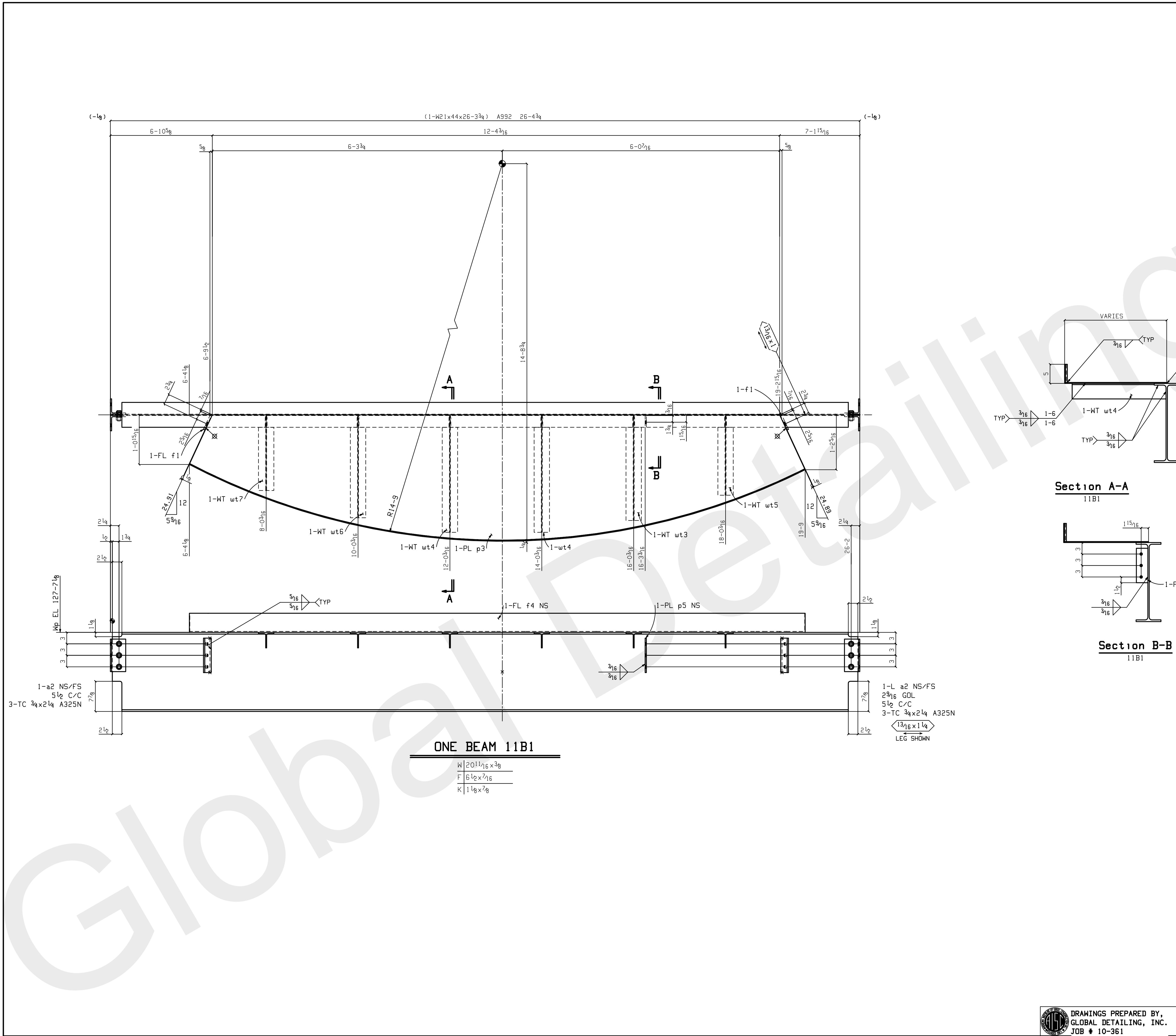

 DRAWINGS PREPARED BY,  
 GLOBAL DETAILING, INC.  
 JOB # 10-361





BILL OF MATERIAL									
LIFT NO.	LIFT QTY.	NO. OF PIECES	MARK	MATERIAL	LENGTH		REMARKS	WEIGHT	
					FT.	IN.		TOTAL	
1	1	ONE	11B1	BEAM				1624	
		1	11B1	W21x44	26	3 3/4		1145	
		2	wt4	WT4x7.5	2	6 1/2		36	
		1	wt3	WT4x7.5	2	3 7/16		16	
		1	wt6	WT4x7.5	2	21 1/16		16	
		1	wt5	WT4x7.5	1	8 13/16		12	
		1	wt7	WT4x7.5	1	7 9/16		11	
		4	a2	L4x4x3/16	0	8 1/2		22	
		2	f1	FL3gx4	0	9		7	
		1	p5	PL5/16x3	0	9		2	
		1	p3	PL1/4x32 3/4	13	4 3/8		295	
		1	f4	FL1/4x5	13	11		59	
		6		TC 3/4 Dia A325N	0	2 1/4	2HD WASH	4	
				FIELD BOLTS					
		12		TC 3/4 Dia A325N	0	1 3/4	1HD WASH		
Total weight :									
HOLES: 13/16 " DIA U.N.O.									
SURFACE PREP: SSPC-SP 2									
FINISH: 1 SHOP COAT STD PRIMER									
ELECTRODES: E70XX-(LOW HYDROGEN)									
GENERAL NOTES:									
ALL DIMENSIONS FROM END OF MAIN MATERIAL UNLESS NOTED.									
ALL VERTICAL SPACING OF HOLES TO BE 3" UNLESS NOTED.									
ALL COPIES TO HAVE 1/2" MINIMUM RADIUS.									
CHARGES FOR CORRECTIVE WORK WILL NOT BE HONORED UNLESS PREVIOUS APPROVAL IS OBTAINED FROM JEFFORDS STEEL AND ENGINEERING COMPANY									
MEMBERS ARE TO BE ERRECTED SO THAT MARKED END IS IN THE SAME LOCATION AS ON THE E DWG									
ON SHOP BOLTED CLIP ANGLES ON BEAMS: ON PC MARK END, INSERT SHOP BOLTS SO THE HEAD OF THE BOLT IS ON THE NEAR SIDE OF BEAM. IN THE NON-PC MARK END, INSERT BOLTS SO THE HEAD OF THE BOLT IS ON THE FAR SIDE OF BEAM.									

Print record

Job no. 4465-1001  
Date Jan 14 2015  
Drawn by JTB  
Checked by DECEB

revisions

description

date

rev#

customer

ReArch Company  
30 COMMUNITY DRIVE  
S. BURLINGTON, VT

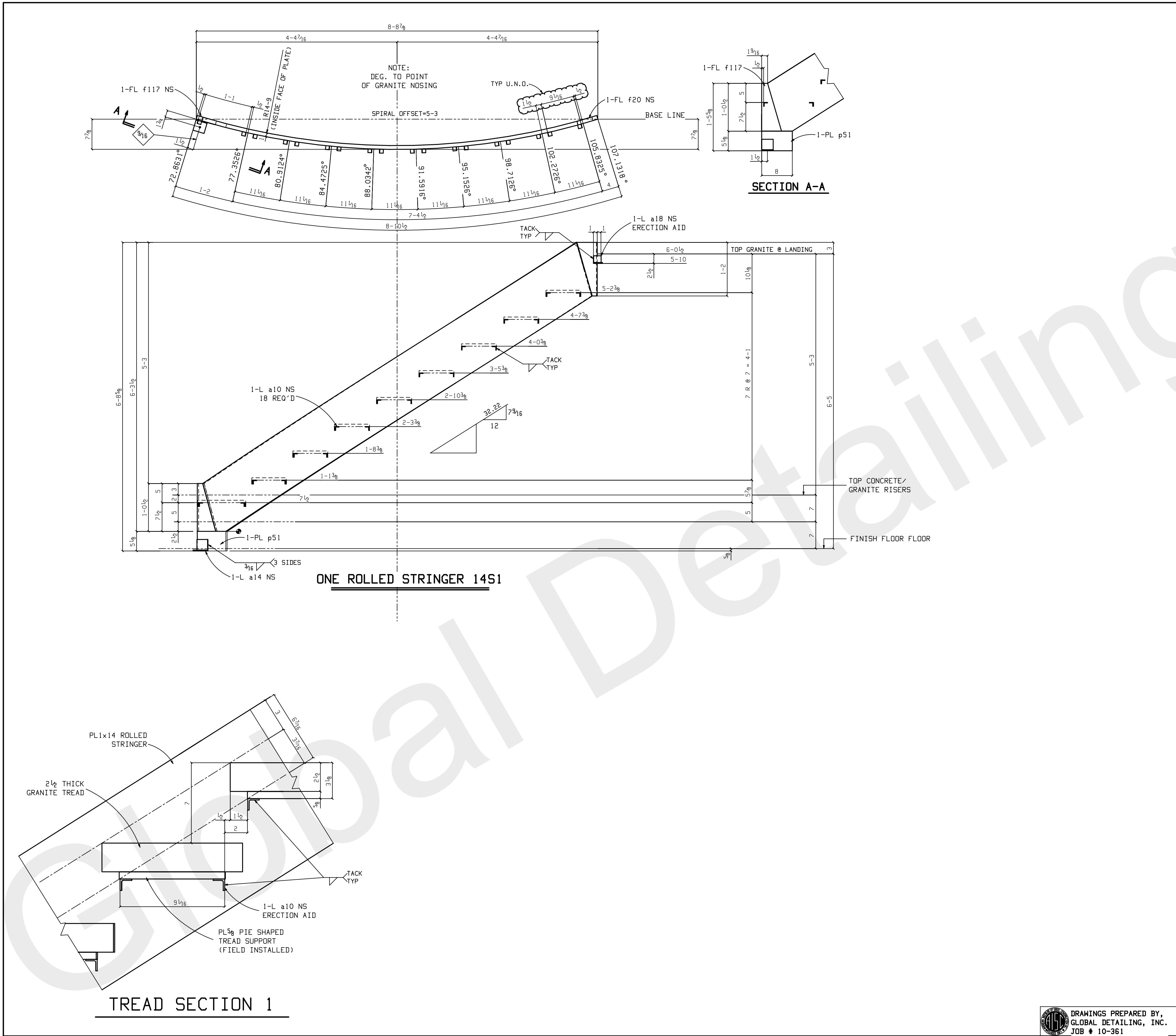
project

GREEN MOUNTAIN COFFEE FIT-UP  
124 TECHNOLOGY PARK  
S. BURLINGTON, VT

sheet

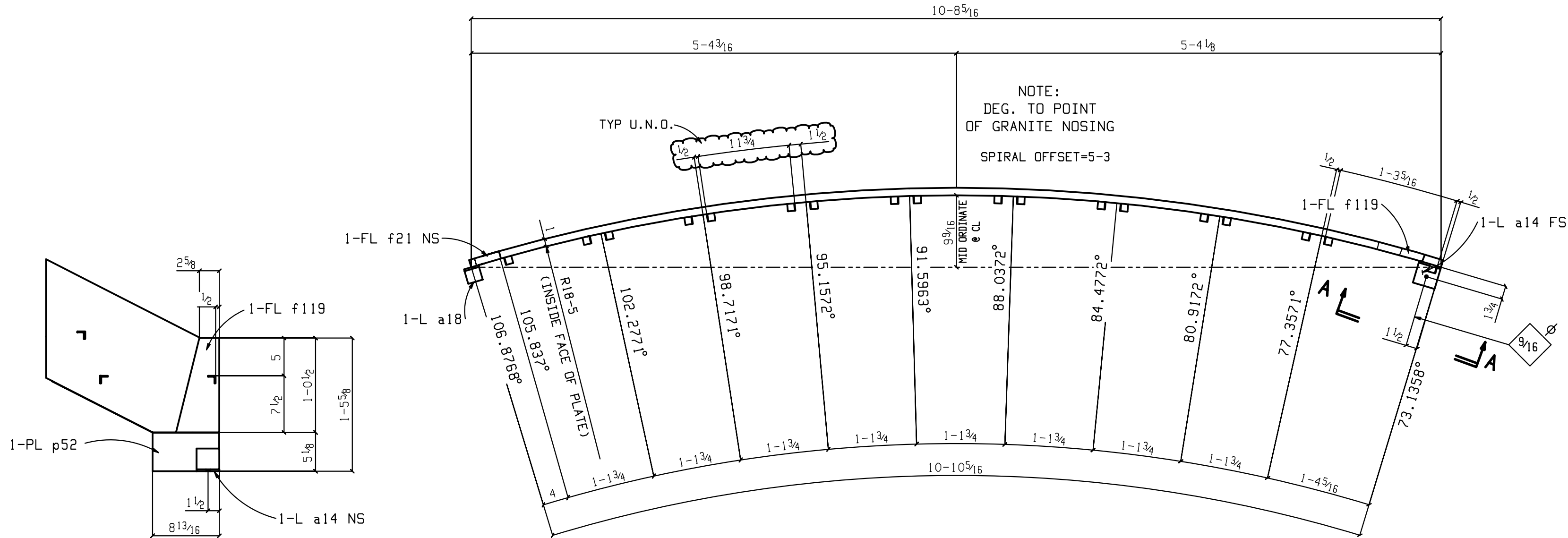
11



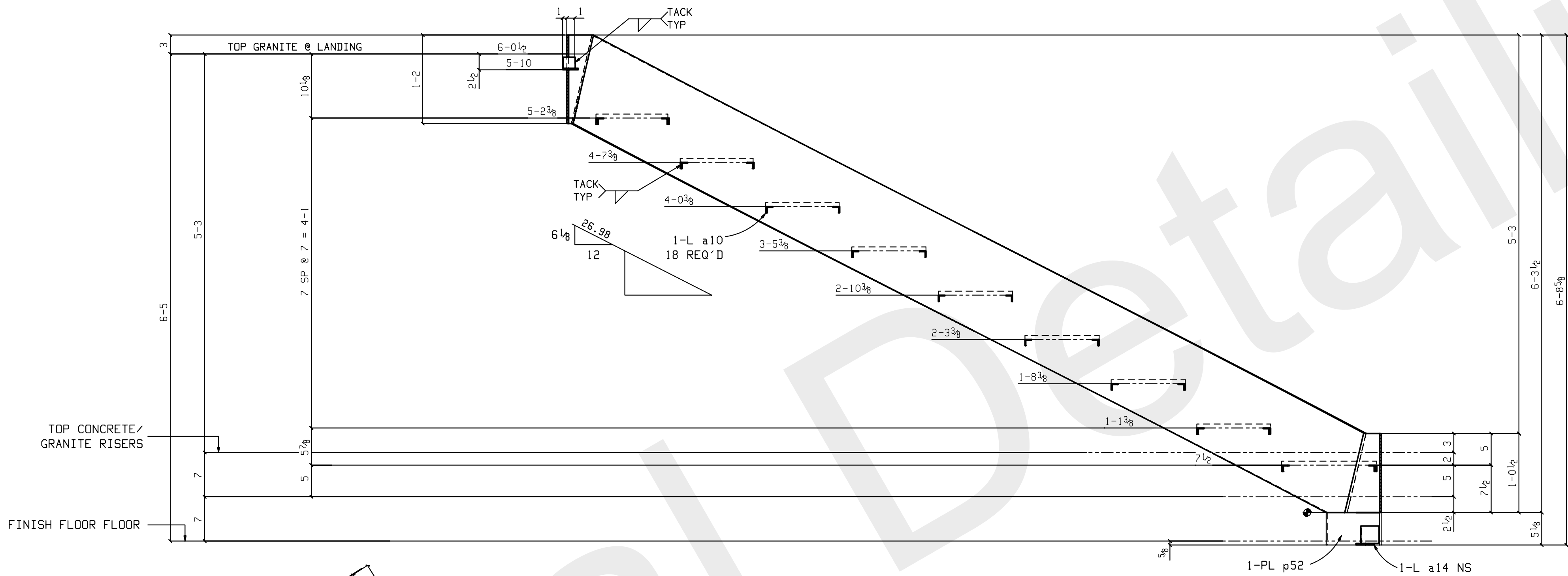


BILL OF MATERIAL									
LIFT NO.	LIFT QTY.	NO. OF PIECES	PIECE MARK	MATERIAL	LENGTH		REMARKS	WEIGHT	
					FT.	IN.		TOTAL	
1	1	ONE	14S1	MISC				506	
			1 14S1	FL1x14	9	9 13/16		466	
			1 a14	L3x3x1/4	0	3		1	
			1 a18	L2x2x1/4	0	2		1	
			18 a10	L1x1x1/8	0	1		1	
			1 f20	FL1x5 7/16	1	2		13	
			1 f117	FL1x5 1/4	1	2		12	
			1 p51	PL1x5 1/8	0	8		12	
Total weight :									
HOLES: 13/16" DIA U.N.O.									
SURFACE PREP: SSPC-SP 2									
FINISH: NO PAINT									
ELECTRODES: E70XX-(LOW HYDROGEN)									
GENERAL NOTES:									
ALL DIMENSIONS FROM END OF MAIN MATERIAL UNLESS NOTED.									
ALL VERTICAL SPACING OF HOLES TO BE 3" UNLESS NOTED.									
ALL COPIES TO HAVE 1/2" MINIMUM RADIUS.									
CHARGES FOR CORRECTIVE WORK WILL NOT BE HONORED UNLESS PREVIOUS APPROVAL IS OBTAINED FROM JEFFORDS STEEL AND ENGINEERING COMPANY									
MEMBERS ARE TO BE ERECTED SO THAT MARKED END IS IN THE SAME LOCATION AS ON THE E DWG									
ON SHOP BOLTED CLIP ANGLES ON BEAMS: ON PC MARK END, INSERT SHOP BOLTS SO THE HEAD OF THE BOLT IS ON THE NEAR SIDE OF BEAM. IN THE NON-PC MARK END, INSERT BOLTS SO THE HEAD OF THE BOLT IS ON THE FAR SIDE OF BEAM.									
print record									
revisions									
description									
REVISED LENGTH									
date 10.21									
rev# 1									
job no. 4445-1001									
date Jan 14 2015									
drawn by JTB									
checked by DECEK									
customer									
ReArch Company									
30 COMMUNITY DRIVE									
S. BURLINGTON, VT									
project									
GREEN MOUNTAIN COFFEE FIT-UP									
124 TECHNOLOGY PARK									
S. BURLINGTON, VT									
sheet									
14									



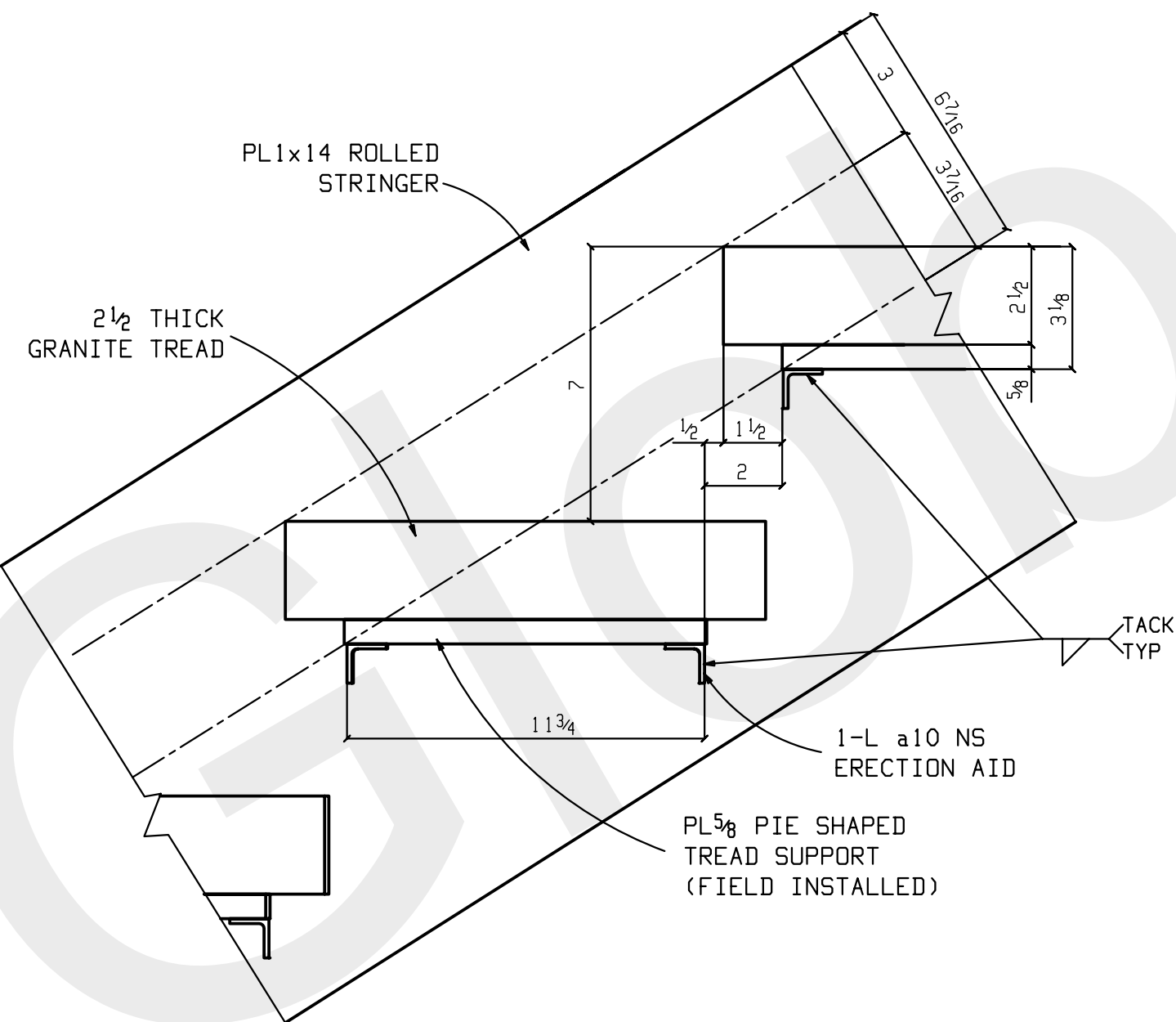


SECTION A-A



TREAD SECTION 1

ONE ROLLED STRINGER 15S1

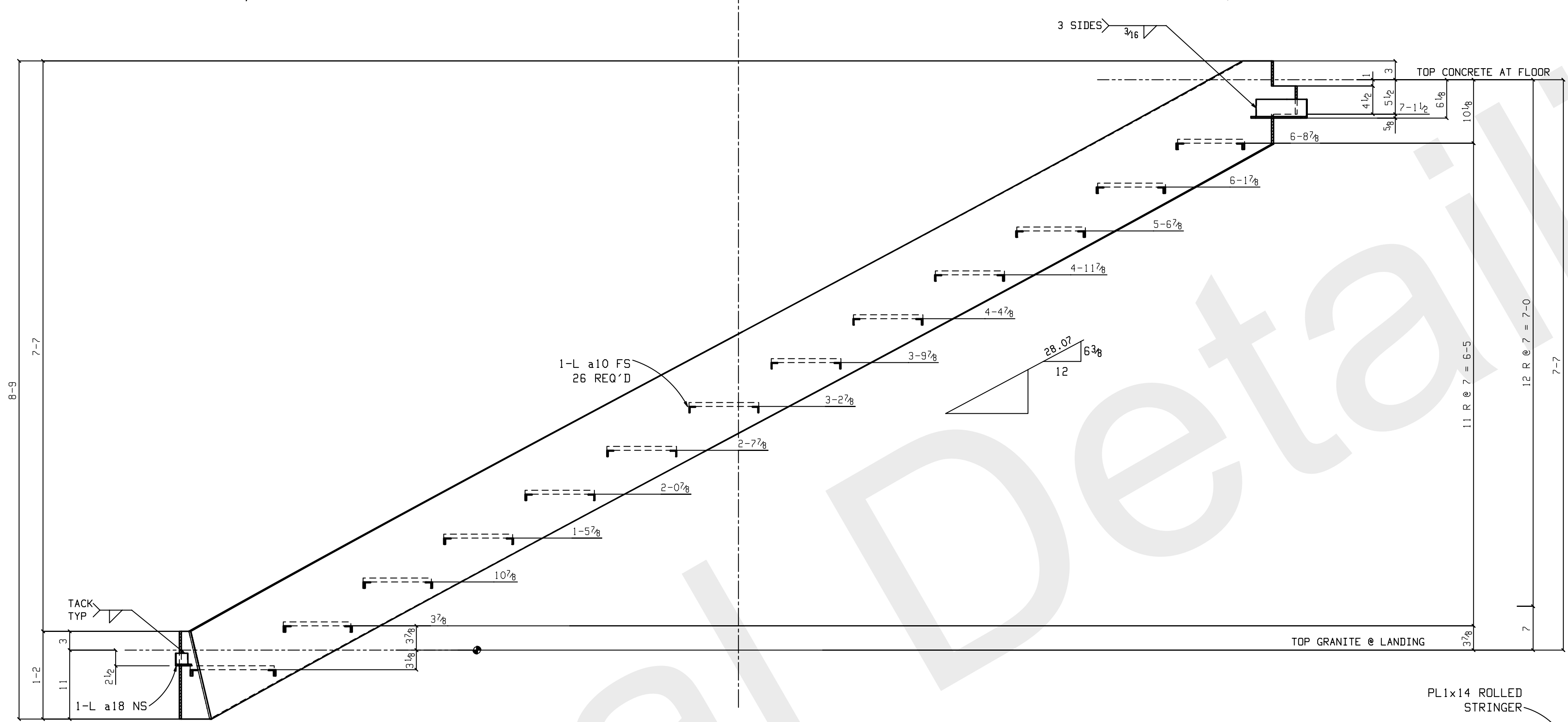


BILL OF MATERIAL									
LIFT NO.	LIFT QTY.	NO. OF PIECES	PIECE MARK	MATERIAL	LENGTH		REMARKS	WEIGHT	
					FT.	IN.		TOTAL	
1	1	ONE	15S1	MISC				590	
			1 15S1	FL1x14	11	7 1/4		550	
			1 a14	L3x3x1/4	0	3		1	
			1 a18	L2x2x1/4	0	2		1	
			18 a10	L1x1x1/8	0	1		1	
			1 f119	FL1x5 3/4	1	2		15	
			1 p52	PL1x5 1/8	0	8 13/16		13	
			1 f21	FL1x4 1/8	1	2		10	
Total weight :									
HOLES: 13/16" DIA U.N.O.									
SURFACE PREP: SSPC-SP 2									
FINISH: NO PAINT									
ELECTRODES: E70XX-(LOW HYDROGEN)									
GENERAL NOTES:									
ALL DIMENSIONS FROM END OF MAIN MATERIAL UNLESS NOTED.									
ALL VERTICAL SPACING OF HOLES TO BE 3" UNLESS NOTED.									
ALL COPIES TO HAVE 1/2" MINIMUM RADIUS.									
CHARGES FOR CORRECTIVE WORK WILL NOT BE HONORED UNLESS PREVIOUS APPROVAL IS OBTAINED FROM JEFFORDS STEEL AND ENGINEERING COMPANY									
MEMBERS ARE TO BE ERECTED SO THAT MARKED END IS IN THE SAME LOCATION AS ON THE E DWG									
ON SHOP BOLTED CLIP ANGLES ON BEAMS: ON PC MARK END, INSERT SHOP BOLTS SO THE HEAD OF THE BOLT IS ON THE NEAR SIDE OF BEAM. IN THE NON-PC MARK END, INSERT BOLTS SO THE HEAD OF THE BOLT IS ON THE FAR SIDE OF BEAM.									
print record									
job no. 4445-1001									
date Jan 14 2015									
drawn by TB									
checked by DECEB									
revisions									
description									
REVISED LENGTH									
rev# date									
1 10.21									
customer									
ReArch Company									
30 COMMUNITY DRIVE									
S. BURLINGTON, VT									
project									
GREEN MOUNTAIN COFFEE FIT-UP									
124 TECHNOLOGY PARK									
S. BURLINGTON, VT									
sheet									
15									









OP GRANITE @ LANDING

37/8 7

PL1x14 ROLLED STRINGER

2 1/2 THICK GRANITE TREAD

3 62/8 37/8 2 1/2 31/8 3/8 7 1/2 1 1/2 2 11 1/8

1-L a10 NS ERECTION AID

PL5/8 PIE SHAPED TREAD SUPPORT (FIELD INSTALLED)

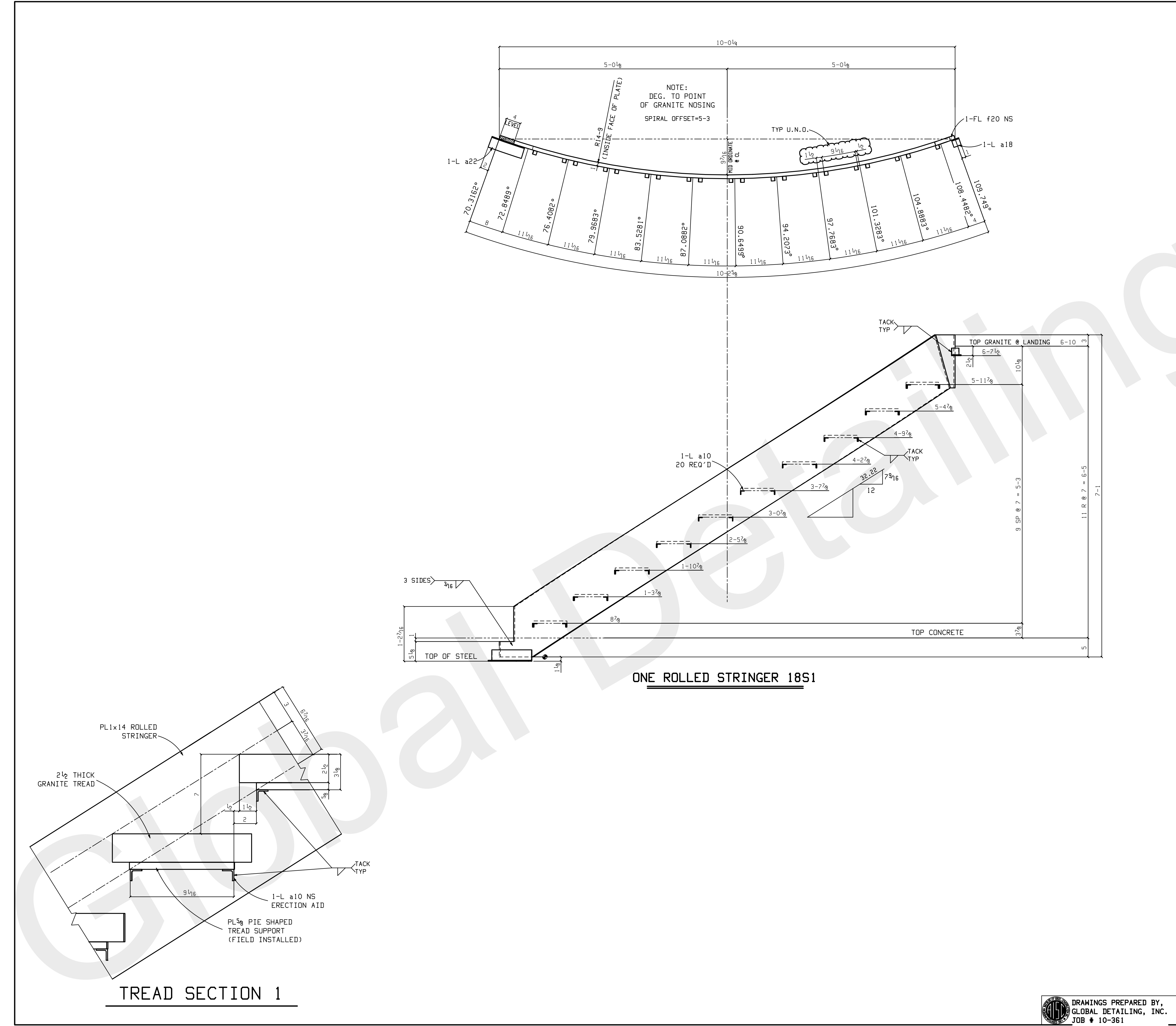
TACK TYP

TREAD SECTION 1

HOLES:	13 <sub>16</sub> " DIA U.N.O.
SURFACE PREP:	SSPC-SP 2
FINISH:	<b>NO PAINT</b>
ELECTRODES:	E70XX-(LOW HYDROGEN)
<u>GENERAL NOTES:</u>	
ALL DIMENSIONS FROM END OF MAIN MATERIAL UNLESS NOTED.	
ALL VERTICAL SPACING OF HOLES TO BE 3" UNLESS NOTED.	
ALL COPES TO HAVE 1/2" MINIMUM RADIUS.	
CHARGES FOR CORRECTIVE WORK WILL NOT BE HONORED UNLESS PREVIOUS APPROVAL IS OBTAINED FROM JEFFORDS STEEL AND ENGINEERING COMPANY	
MEMBERS ARE TO BE ERCTED SO THAT MARKED END IS IN THE SAME LOCATION AS ON THE E DNG	
ON SHOP BOLTED CLIP ANGLES ON BEAMS: ON PC MARK END, INSERT SHOP BOLTS SO THE HEAD OF THE BOLT IS ON THE NEAR SIDE OF BEAM. IN THE NON-PC MARK END, INSERT BOLTS SO THE HEAD OF THE BOLT IS ON THE FAR SIDE OF BEAM.	

project		customer	
GREEN MOUNTAIN COFFEE FIT-UP		ReArch Company	
124 TECHNOLOGY PARK		30 COMMUNITY DRIVE	
S. BURLINGTON, VT		S. BURLINGTON, VT	





BILL OF MATERIAL									
LIFT NO.	LIFT QTY.	NO. OF PIECES	PIECE MARK	MATERIAL	LENGTH		REMARKS	WEIGHT	
					FT.	IN.		TOTAL	
1	1	ONE	18S1	MISC				562	
			1 18S1	FL1x14	11	1 1/16		543	
			1 a22	L3x3x1/4	0	1 1/16		5	
			1 a18	L2x2x1/4	0	2		1	
			20 a10	L1x1x1/8	0	1		1	
			1 f20	FL1x5 7/16	1	2		13	
Total weight :									
HOLES: 13/16" DIA U.N.D.									
SURFACE PREP: SSPC-SP 2									
FINISH: NO PAINT									
ELECTRODES: E70XX-(LOW HYDROGEN)									
GENERAL NOTES:									
ALL DIMENSIONS FROM END OF MAIN MATERIAL UNLESS NOTED.									
ALL VERTICAL SPACING OF HOLES TO BE 3" UNLESS NOTED.									
ALL COPIES TO HAVE 1/2" MINIMUM RADIUS.									
CHARGES FOR CORRECTIVE WORK WILL NOT BE HONORED UNLESS PREVIOUS APPROVAL IS OBTAINED FROM JEFFORDS STEEL AND ENGINEERING COMPANY									
MEMBERS ARE TO BE ERECTED SO THAT MARKED END IS IN THE SAME LOCATION AS ON THE E DWG									
ON SHOP BOLTED CLIP ANGLES ON BEAMS: ON PC MARK END, INSERT SHOP BOLTS SO THE HEAD OF THE BOLT IS ON THE NEAR SIDE OF BEAM. IN THE NON-PC MARK END, INSERT BOLTS SO THE HEAD OF THE BOLT IS ON THE FAR SIDE OF BEAM.									

print record

job no. 4445-1001  
date Jan 14 2015  
drawn by TB  
checked by DEB33

revisions

description  
REVISED LENGTH

rev#  
1

date  
10.21

customer

ReArch Company  
30 COMMUNITY DRIVE  
S. BURLINGTON, VT

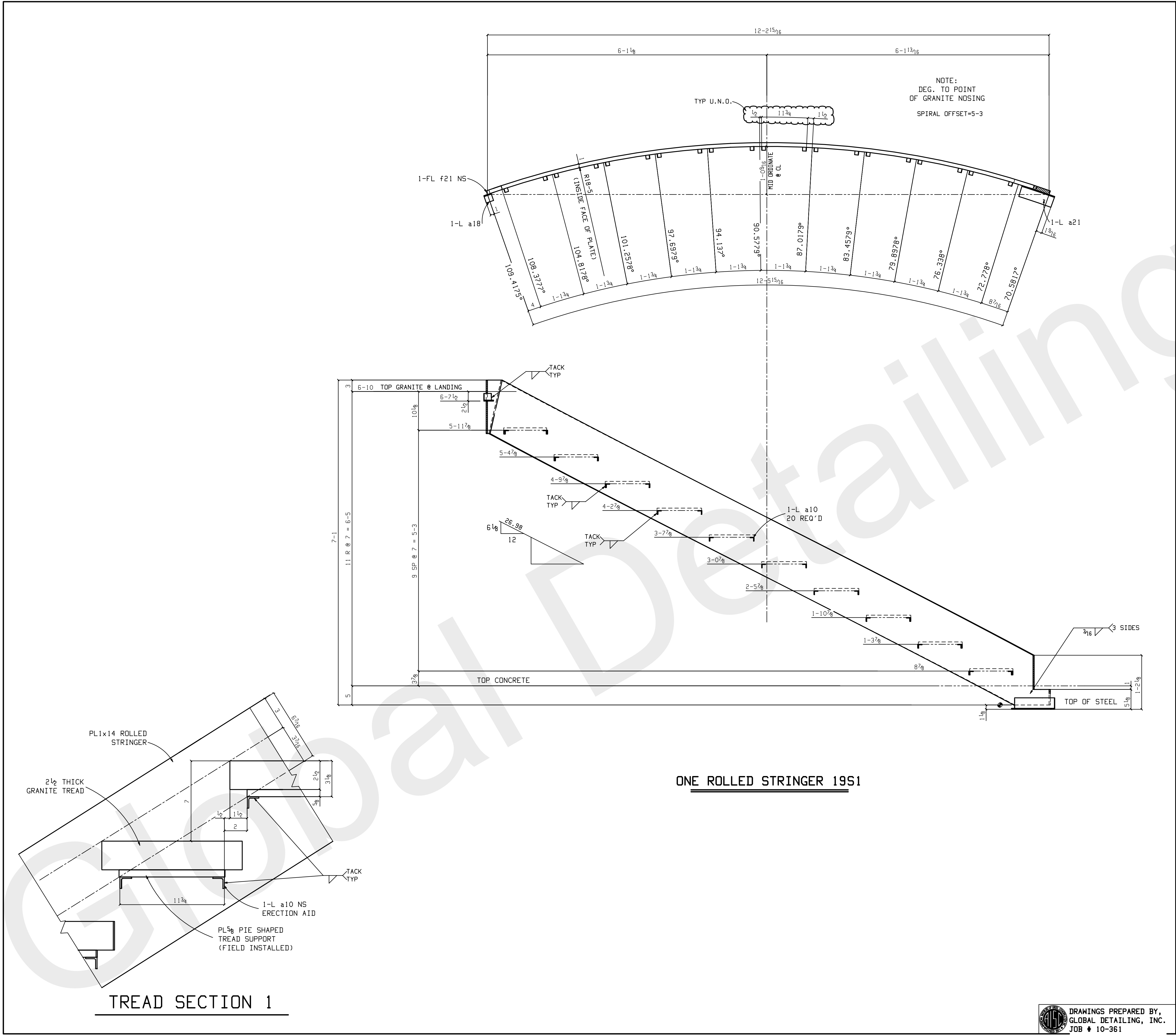
project

GREEN MOUNTAIN COFFEE FIT-UP  
124 TECHNOLOGY PARK  
S. BURLINGTON, VT

sheet

18



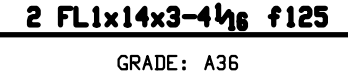
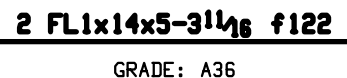
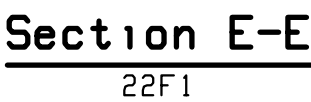


BILL OF MATERIAL									
LIFT NO.	LIFT QTY.	NO. OF PIECES	PIECE MARK	MATERIAL	LENGTH		REMARKS	WEIGHT	
					FT.	IN.		TOTAL	
1	1	ONE	19S1	MISC				654	
		1	19S1	FL1x14	13	3/8		638	
		1	a21	L3x3x1/4	0	11		4	
		1	a18	L2x2x1/4	0	2		1	
		20	a10	L1x1x1/8	0	1		1	
		1	f21	FL1x41/8	1	2		10	
Total weight :									
HOLES: 13/16" DIA U.N.O.									
SURFACE PREP: SSPC-SP 2									
FINISH: NO PAINT									
ELECTRODES: E70XX-(LOW HYDROGEN)									
GENERAL NOTES:									
ALL DIMENSIONS FROM END OF MAIN MATERIAL UNLESS NOTED.									
ALL VERTICAL SPACING OF HOLES TO BE 3" UNLESS NOTED.									
ALL COPES TO HAVE 1/2" MINIMUM RADIUS.									
CHARGES FOR CORRECTIVE WORK WILL NOT BE HONORED UNLESS PREVIOUS APPROVAL IS OBTAINED FROM JEFFORDS STEEL AND ENGINEERING COMPANY									
MEMBERS ARE TO BE ERECTED SO THAT MARKED END IS IN THE SAME LOCATION AS ON THE E DWG									
ON SHOP BOLTED CLIP ANGLES ON BEAMS: ON PC MARK END, INSERT SHOP BOLTS SO THE HEAD OF THE BOLT IS ON THE NEAR SIDE OF BEAM. IN THE NON-PC MARK END, INSERT BOLTS SO THE HEAD OF THE BOLT IS ON THE FAR SIDE OF BEAM.									
print record									
job no. 4445-1001									
date Jan 14 2015									
drawn by TB									
checked by DECEB									
revisions									
description									
REVISED LENGTH									
rev# date									
1 10.21									
customer									
ReArch Company									
30 COMMUNITY DRIVE									
S. BURLINGTON, VT									
project									
GREEN MOUNTAIN COFFEE FIT-UP									
124 TECHNOLOGY PARK									
S. BURLINGTON, VT									
sheet									
19									







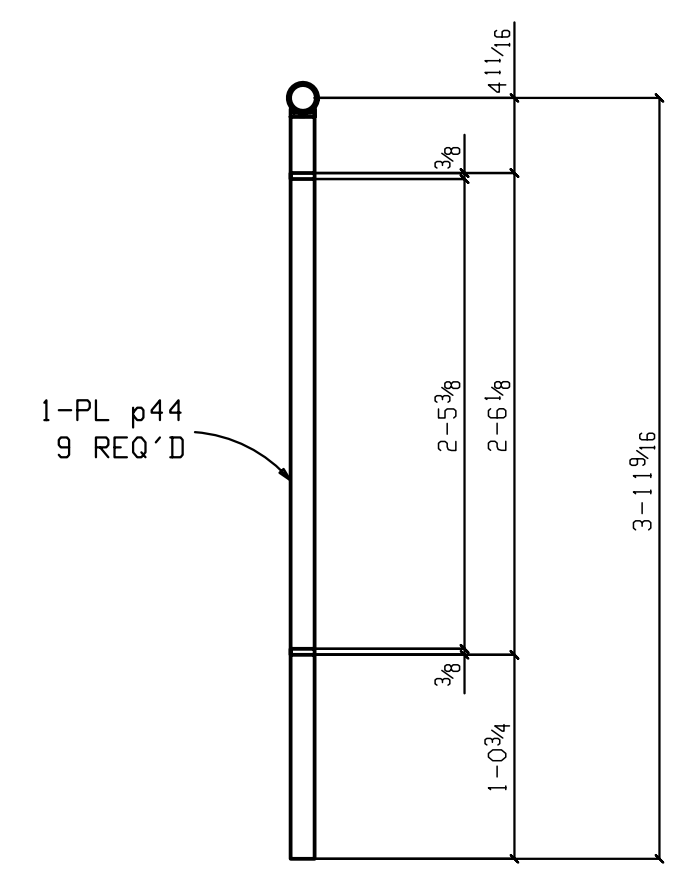
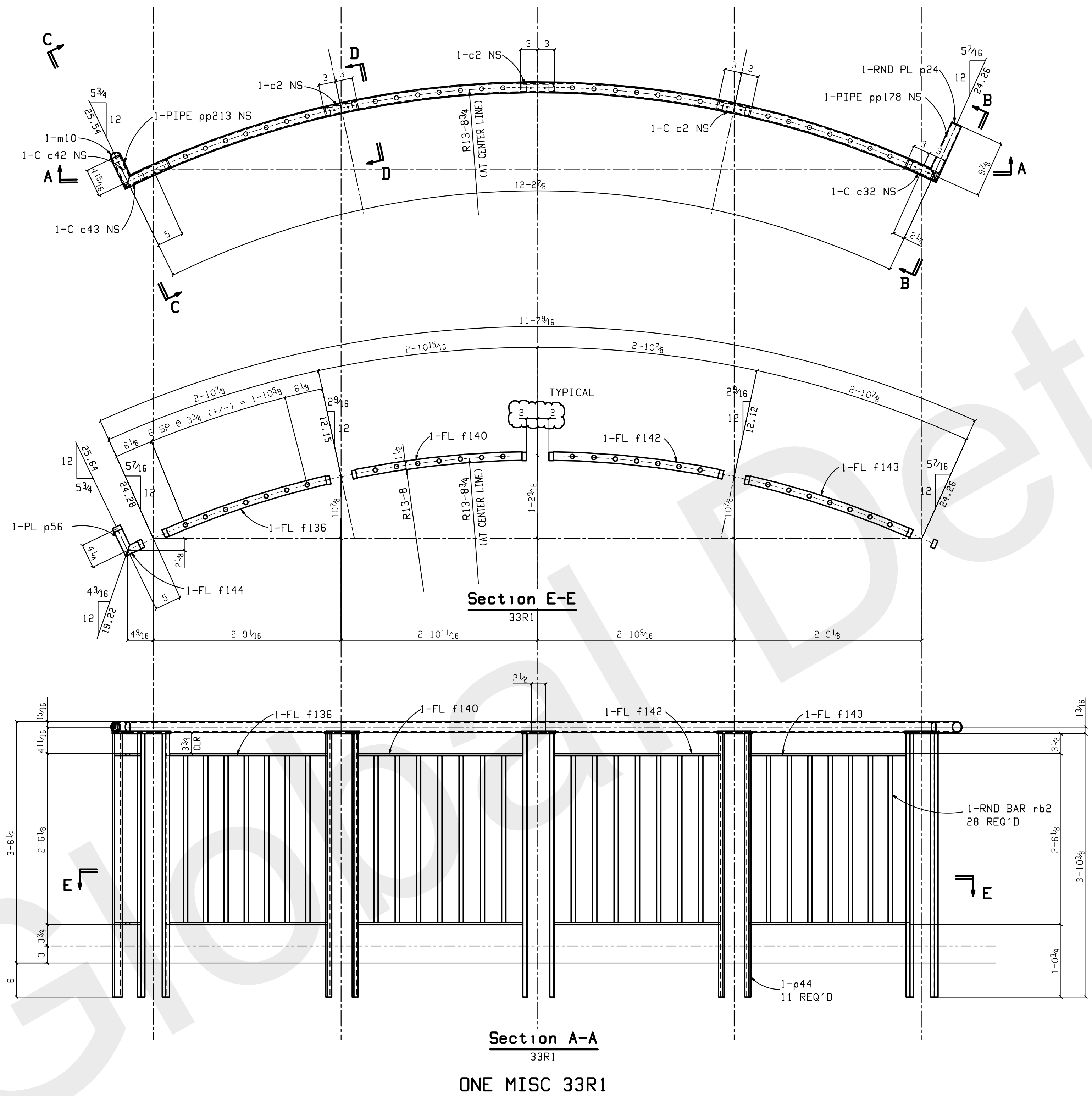
[illegible]



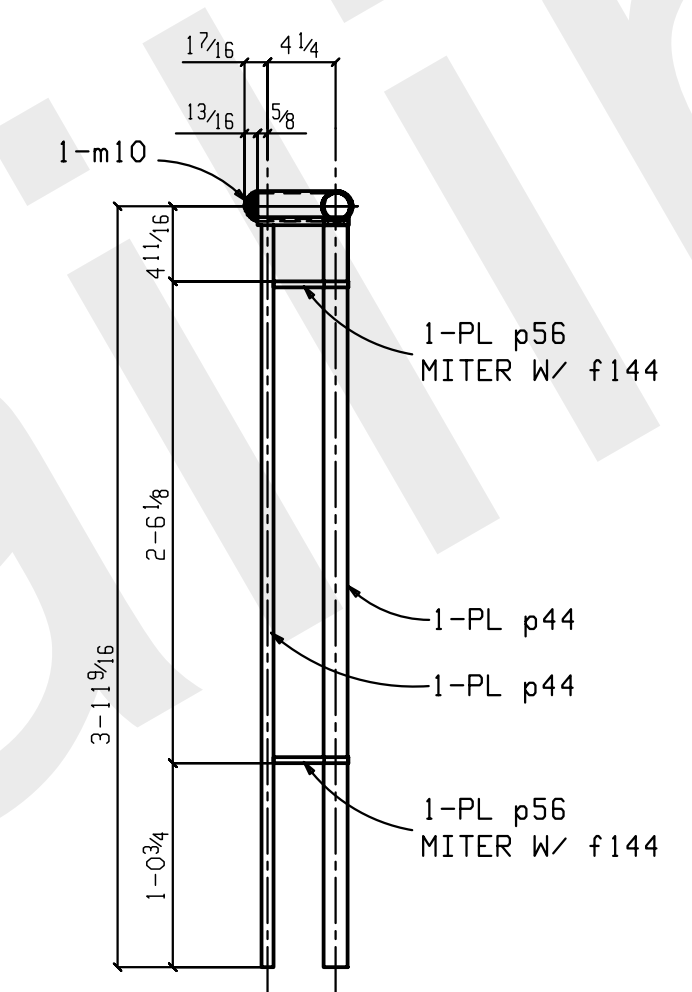




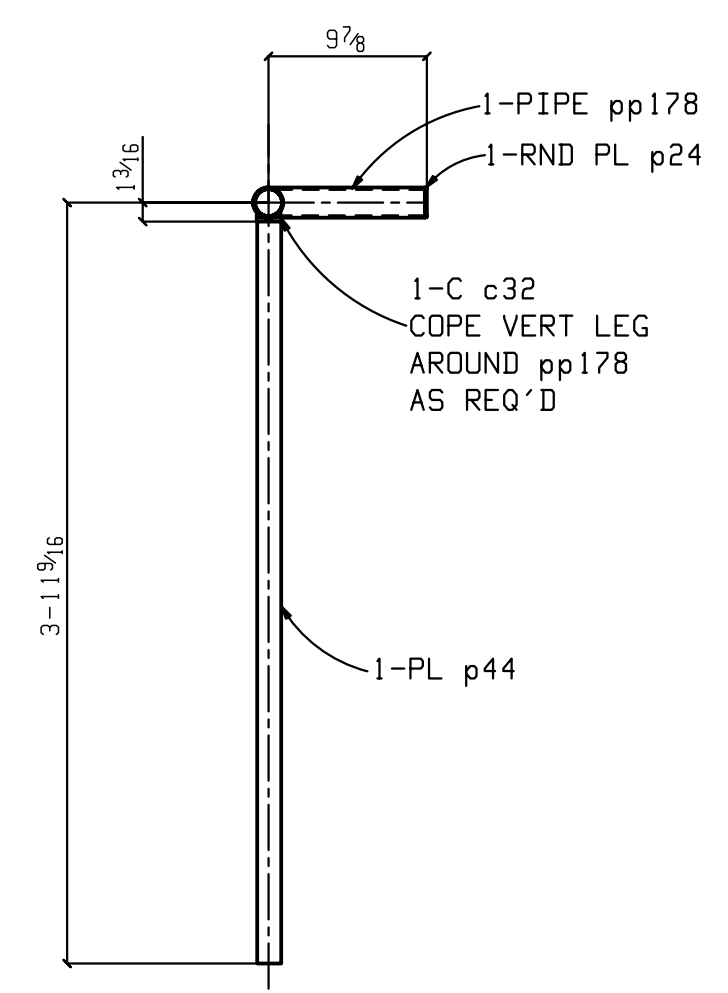
WORK RAIL DETAILS WITH SHEET  
43, ES6 AND ES7 FOR TYPICAL RAIL  
DETAILS



Section D-D  
33R1



Section C-C  
33R1



Section B-B  
33R1

BILL OF MATERIAL							
LIFT NO.	LIFT QTY.	NO. OF PIECES	PIECE MARK	MATERIAL	LENGTH FT.	IN.	WEIGHT TOTAL
1	1	ONE	33R1	MISC			346
			1 33R1	ALUM PIPE 1 1/2 STD	12	5 3/8	33
			1 pp178	ALUM PIPE 1 1/2 STD	0	10 3/4	2
			1 pp213	ALUM PIPE 1 1/2 STD	0	5 3/8	1
			1 c43	MC1 1/2x1.4	0	8 13/16	1
			1 c32	MC1 1/2x1.4	0	6	1
			3 c2	MC1 1/2x1.4	0	6	2
			1 c42	MC1 1/2x1.4	0	5 11/16	1
			2 f143	FL1 1/2x3/8	2	5 3/16	9
			2 f140	FL1 1/2x3/8	2	5 3/16	9
			2 f136	FL1 1/2x3/8	2	5 3/16	9
			2 f142	FL1 1/2x3/8	2	5 3/16	9
			2 f144	FL1 1/2x3/8	0	3 1/16	1
			11 p44	PL 3/8x1 1/2	3	10 3/8	163
			2 p56	PL 3/8x1 1/2	0	4 11/16	1
			1 m10	1 1/8 DIA ALUM BALL CAP			0
			1 p24	WAGNER SAS14			0
			28 rb2	SO FL 3/4 x 3/4	2	5 3/8	102
Total weight :							

HOLES: 13/16" DIA U.N.D.  
SURFACE PREP: SSPC-SP 2  
FINISH: NO PAINT  
ELECTRODES: E70XX-(LOW HYDROGEN)

GENERAL NOTES:  
ALL DIMENSIONS FROM END OF MAIN MATERIAL UNLESS NOTED.  
ALL VERTICAL SPACING OF HOLES TO BE 3" UNLESS NOTED.  
ALL COPIES TO HAVE 1/2" MINIMUM RADIUS.  
CHARGES FOR CORRECTIVE WORK WILL NOT BE HONORED UNLESS PREVIOUS APPROVAL IS OBTAINED FROM JEFFORDS STEEL AND ENGINEERING COMPANY  
MEMBERS ARE TO BE ERECTED SO THAT MARKED END IS IN THE SAME LOCATION AS ON THE E DWG  
ON SHOP BOLTED CLIP ANGLES ON BEAMS: ON PC MARK END, INSERT SHOP BOLTS SO THE HEAD OF THE BOLT IS ON THE NEAR SIDE OF BEAM. IN THE NON-PC MARK END, INSERT BOLTS SO THE HEAD OF THE BOLT IS ON THE FAR SIDE OF BEAM.

print record

job no. 4445-1001  
date Jan 14 2015  
drawn by JTB  
checked by DEEJEC

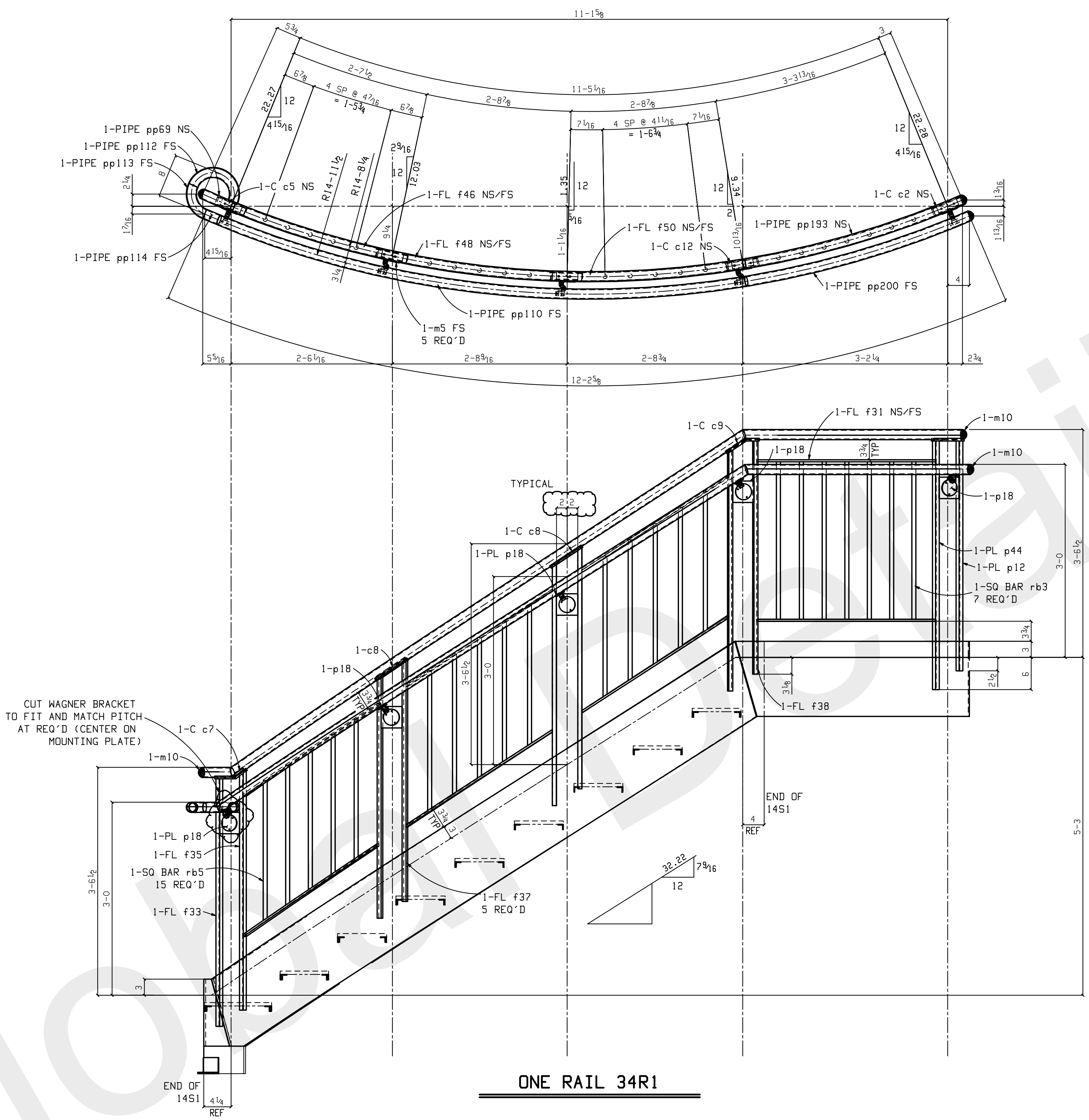
revisions  
description  
REVISED LENGTH  
rev# date  
1 10.21

customer  
ReArch Company  
30 COMMUNITY DRIVE  
S. BURLINGTON, VT

project  
GREEN MOUNTAIN COFFEE FIT-UP  
124 TECHNOLOGY PARK  
S. BURLINGTON, VT

sheet  
33





WORK RAIL DETAILS WITH SHEET  
43, ES6 AND ES7 FOR TYPICAL RAIL  
DETAILS

BILL OF MATERIAL									
LIFT NO.	LIFT QTY.	NO. OF PIECES	PIECE MARK	MATERIAL	LENGTH FT.	IN.	REMARKS	WEIGHT TOTAL	
1	1	ONE	34R1	RAIL				323	
			1 34R1	ALUM PIPE 1 1/2 STD	9	8 3/4	CLEAR ANODIZE	26	
			1 pp110	ALUM PIPE 1 1/2 STD	9	7 13/16	CLEAR ANODIZE	27	
			1 pp200	ALUM PIPE 1 1/2 STD	3	7 15/16	CLEAR ANODIZE	10	
			1 pp193	ALUM PIPE 1 1/2 STD	3	7	CLEAR ANODIZE	10	
			1 pp112	ALUM PIPE 1 1/2 STD	1	3 9/16	CLEAR ANODIZE	3	
			1 pp113	ALUM PIPE 1 1/2 STD	0	7 15/16	CLEAR ANODIZE	1	
			1 pp69	ALUM PIPE 1 1/2 STD	0	6 3/8	CLEAR ANODIZE	1	
			1 pp114	ALUM PIPE 1 1/2 STD	0	3 1/4	CLEAR ANODIZE	1	
			2 c8	MC1 1/2x1.4	0	7		2	
			1 c2	MC1 1/2x1.4	0	6		1	
			1 c9	MC1 1/2x1.4	0	4 3/8		1	
			1 c5	MC1 1/2x1.4	0	3 3/8		0	
			1 c7	MC1 1/2x1.4	0	2 13/16		0	
			1 c12	MC1 1/2x1.4	0	2 9/16		0	
			2 f48	FL1 1/2x3/8	5	8 3/4		10	
			2 f50	FL1 1/2x3/8	5	8 3/4		10	
			2 f46	FL1 1/2x3/8	5	8 3/16		10	
			3 f31	FL1 1/2x3/8	2	10 7/16		16	
			1 p44	PL 3/4x1 1/2	3	10 3/8		15	
			1 f33	FL 3/4x1 1/2	3	10 1/8		15	
			5 f37	FL 3/4x1 1/2	3	8 15/16		35	
			1 f35	FL 3/4x1 1/2	3	8 9/16		14	
			1 f38	FL 3/4x1 1/2	3	7 1/2		14	
			1 p12	PL 3/4x1 1/2	3	6 7/8		14	
			5 p18	PL 1/4x4	0	4		6	
			5 m5	WAG 1937F	0	1 3/4	CLEAR ANODIZE	5	
			3 m10	ALUM RPL 1/8x1 7/8			CLEAR ANODIZE	1	
			7 rb3	FL 3/4 x 3/4	2	5 3/8		33	
			10 rb5	FL 3/4 x 3/4	2	2 1/4		42	
Total weight :									
HOLES: 1 3/16 " DIA U.N.D.									
SURFACE PREP: SSPC-SP 2									
FINISH: NO PAINT									
ELECTRODES: E70XX-(LOW HYDROGEN)									
GENERAL NOTES:									
ALL DIMENSIONS FROM END OF MAIN MATERIAL UNLESS NOTED.									
ALL VERTICAL SPACING OF HOLES TO BE 3" UNLESS NOTED.									
ALL COPIES TO HAVE 1/2" MINIMUM RADIUS.									
CHARGES FOR CORRECTIVE WORK WILL NOT BE HONORED UNLESS PREVIOUS APPROVAL IS OBTAINED FROM JEFFORDS STEEL AND ENGINEERING COMPANY									
MEMBERS ARE TO BE ERECTED SO THAT MARKED END IS IN THE SAME LOCATION AS ON THE E DWG									
ON SHOP BOLTED CLIP ANGLES ON BEAMS: ON PC MARK END, INSERT SHOP BOLTS SO THE HEAD OF THE BOLT IS ON THE NEAR SIDE OF BEAM. IN THE NON-PC MARK END, INSERT BOLTS SO THE HEAD OF THE BOLT IS ON THE FAR SIDE OF BEAM.									

print record

job no. 445-1001  
date Jan 14 2015  
drawn by JTB  
checked by DECEB

revisions

description  
REVISED LENGTH

rev#  
1

date  
10.21

customer

ReArch Company  
30 COMMUNITY DRIVE  
S. BURLINGTON, VT

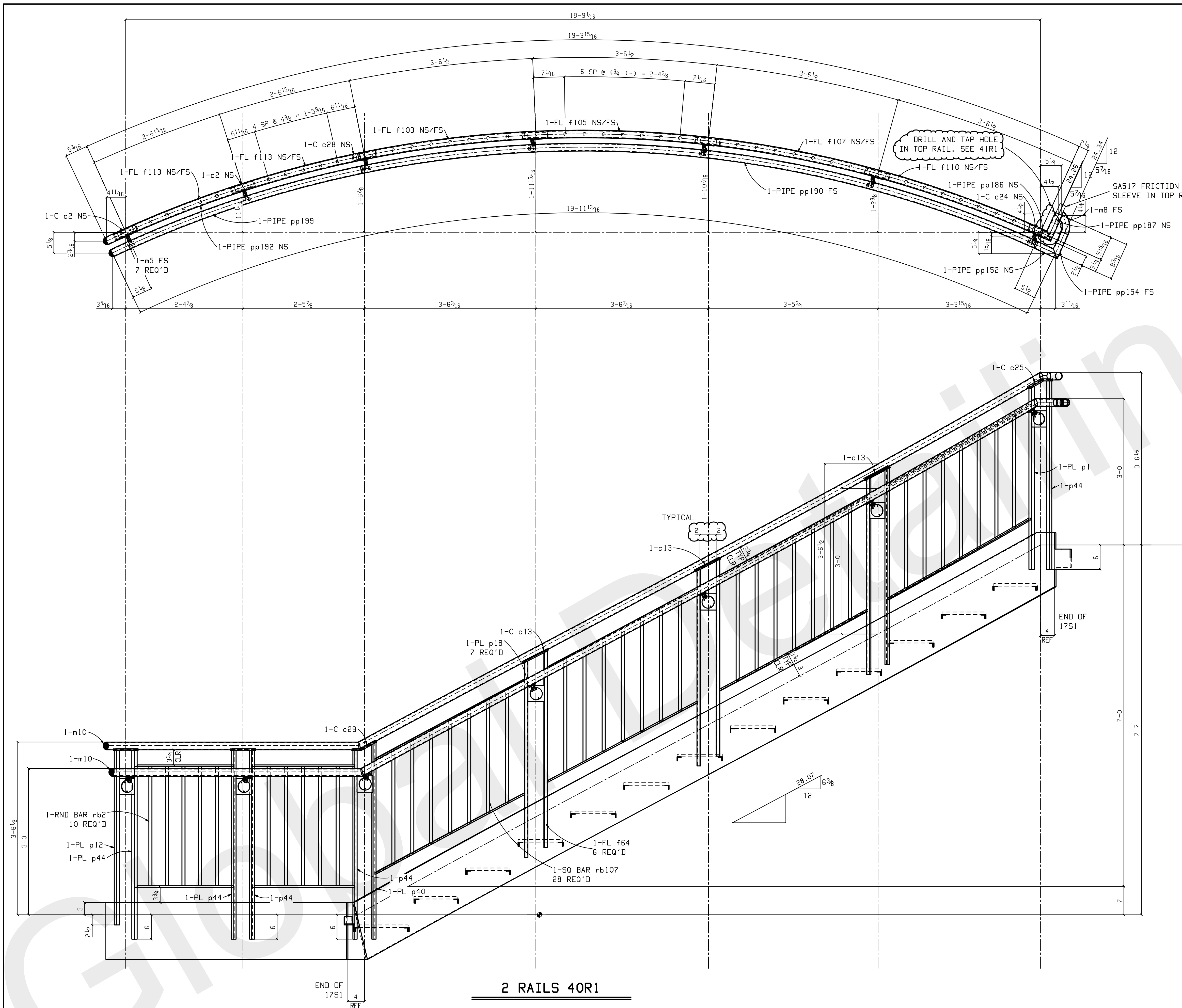
project

GREEN MOUNTAIN COFFEE FIT-UP  
124 TECHNOLOGY PARK  
S. BURLINGTON, VT

sheet

34





2 RAILS 40R1

WORK RAIL DETAILS WITH SHEET  
43, ES6 AND ES7 FOR TYPICAL RAIL  
DETAILS



DRAWINGS PREPARED BY,  
GLOBAL DETAILING, INC.  
JOB # 10-361

## BILL OF MATERIAL

LIFT NO.	LIFT QTY.	NO. OF PIECES	MARK	MATERIAL	LENGTH FT.	IN.	REMARKS	WEIGHT TOTAL
1	2	2	40R1	RAIL				1132
		2	40R1	ALUM PIPE 1 1/2 STD	16	0 1/16	CLEAR ANODIZE	87
		2	pp190	ALUM PIPE 1 1/2 STD	15	10 1/4	CLEAR ANODIZE	87
		2	pp192	ALUM PIPE 1 1/2 STD	5	6 3/16	CLEAR ANODIZE	30
		2	pp199	ALUM PIPE 1 1/2 STD	5	5 3/8	CLEAR ANODIZE	30
		2	pp187	ALUM PIPE 1 1/2 STD	0	6 15/16	CLEAR ANODIZE	3
		2	pp152	ALUM PIPE 1 1/2 STD	0	6 1/2	CLEAR ANODIZE	2
		2	pp154	ALUM PIPE 1 1/2 STD	0	3 1/2	CLEAR ANODIZE	1
		2	pp186	ALUM PIPE 1 1/2 STD	0	3 1/4	CLEAR ANODIZE	1
		6	c13	MC1 1/2 x 1.4	0	6 15/16		5
		4	c2	MC1 1/2 x 1.4	0	6		3
		2	c29	MC1 1/2 x 1.4	0	4 9/16		1
		2	c25	MC1 1/2 x 1.4	0	4 1/16		1
		2	c24	MC1 1/2 x 1.4	0	2 5/8		1
		2	c28	MC1 1/2 x 1.4	0	1 15/16		0
		4	f103	FL 1 1/2 x 3/8	7	7 7/8		27
		4	f107	FL 1 1/2 x 3/8	7	7 7/8		27
		4	f105	FL 1 1/2 x 3/8	7	7 7/8		27
		4	f110	FL 1 1/2 x 3/8	7	7 13/16		27
		8	f113	FL 1 1/2 x 3/8	2	1 1/2		32
		10	p44	PL 3/4 x 1 1/2	3	10 3/8		148
		2	p40	PL 3/4 x 1 1/2	4	0 1/2		31
		14	f64	FL 3/4 x 1 1/2	3	8 15/16		201
		2	p12	PL 3/4 x 1 1/2	3	6 7/8		27
		2	p1	PL 3/4 x 1 1/2	3	9 1/16		29
		14	p18	PL 1/4 x 4	0	4		16
		14	m5	WAG 1937F	0	1 3/4	CLEAR ANODIZE	15
		4	m10	ALUM 1 7/8 DIA BALL CAP			CLEAR ANODIZE	1
		2	m8	WAGNER SAS19	0	8 15/16	CLEAR ANODIZE	3
		2		SAS17 FRICTION SLEEVE	0	5		1
		20	rb2	SQ 3/4 x 3/4	2	5 3/8		73
		56	rb107	SQ 3/4 x 3/4	2	4		195
Total weight :								

HOLES: 1 3/16 " DIA U.N.O.  
SURFACE PREP: SSPC-SP 2  
FINISH: NO PAINT  
ELECTRODES: E70XX-(LOW HYDROGEN)

### GENERAL NOTES:

ALL DIMENSIONS FROM END OF MAIN MATERIAL UNLESS NOTED.  
ALL VERTICAL SPACING OF HOLES TO BE 3" UNLESS NOTED.  
ALL COPES TO HAVE 1/2" MINIMUM RADIUS.  
CHARGES FOR CORRECTIVE WORK WILL NOT BE HONORED UNLESS PREVIOUS APPROVAL IS OBTAINED FROM JEFFORDS STEEL AND ENGINEERING COMPANY  
MEMBERS ARE TO BE ERCTED SO THAT MARKED END IS IN THE SAME LOCATION AS ON THE E DWG  
ON SHOP BOLTED CLIP ANGLES ON BEAMS: ON PC MARK END, INSERT SHOP BOLTS SO THE HEAD OF THE BOLT IS ON THE NEAR SIDE OF BEAM. IN THE NON-PC MARK END, INSERT BOLTS SO THE HEAD OF THE BOLT IS ON THE FAR SIDE OF BEAM.

print record
MP-10-36

job no. 4445-1001  
date Jan 14 2015  
drawn by JTB  
checked by DEB33


revisions	description	REVISED LENGTH
rev#	date	
1	10.21	

customer  
ReArch Company  
30 COMMUNITY DRIVE  
S. BURLINGTON, VT

project  
GREEN MOUNTAIN COFFEE FIT-UP  
124 TECHNOLOGY PARK  
S. BURLINGTON, VT

sheet  
40






DRAWINGS PREPARED BY,  
GLOBAL DETAILING, INC.  
JOB # 10-361





 DRAWINGS PREPARED BY,  
GLOBAL DETAILING, INC.  
JOB # 10-361