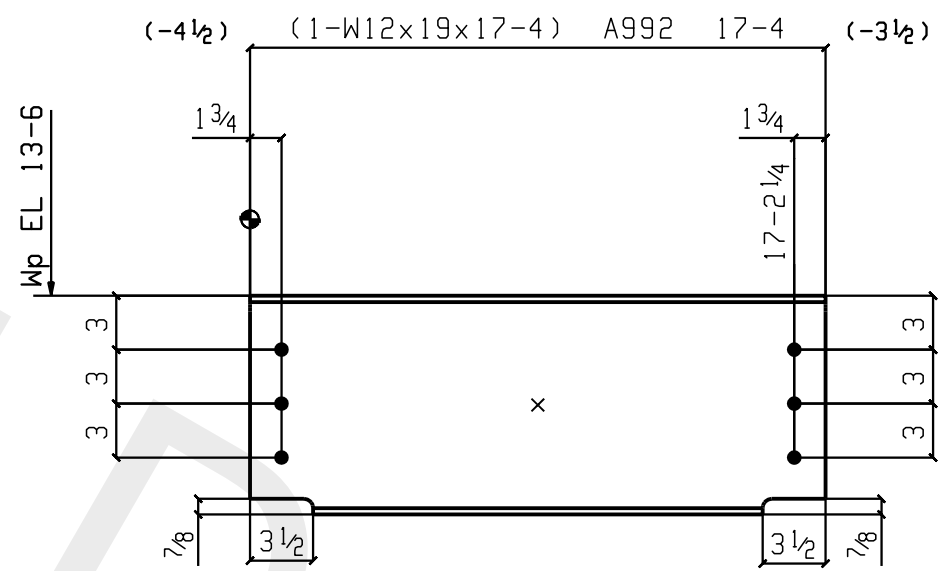


Global Detailing



DO NOT PAINT
TOP FLANGE

2 BEAMS 2B1

W	12 ³ / ₁₆ x 1/4
F	4 x 3/8
K	7/8 x 5/8

BILL OF MATERIAL

LIFT NO.	LIFT QTY.	NO. OF PIECES	PIECE MARK	MATERIAL	LENGTH FT. IN.	REMARKS	WEIGHT TOTAL
2	2	2	2B1	BEAM			659
		2	2B1	W12x19	17 4	A992	659
		12		FIELD BOLTS			
				3/4 Dia A325	0 2	1HD WASH	
							659



DRAWINGS PREPARED BY,
GLOBAL DETAILING, INC.
JOB # 12-407

HOLES: 1³/₁₆" DIA U.N.O.
SURFACE PREP: SSPC-SP 3
FINISH: 1 S/C GRAY PRIMER
ELECTRODES: E70XX-(LOW HYDROGEN)

GENERAL NOTES: ___
ALL DIMENSIONS FROM END OF MAIN MATERIAL U/N.
ALL VERTICAL SPACING OF HOLES TO BE 3" U/N.
ALL COPES TO HAVE 1/4" MINIMUM RADIUS.

CHARGES FOR CORRECTIVE WORK WILL NOT BE HONORED UNLESS PREVIOUS APPROVAL IS OBTAINED FROM JEFFORDS STEEL AND ENGINEERING COMPANY.

MEMBERS ARE TO BE ERECTED SO THAT MARKED END IS IN THE SAME LOCATION AS ON THE ERECTION DRAWING.
ON SHOP BOLTED CLIP ANGLES ON BEAMS: ON PIECE MARK END, INSERT SHOP BOLTS SO THE HEAD OF THE BOLT IS ON THE NEAR SIDE OF BEAM. ON THE NON-PIECE MARK END, INSERT BOLTS SO THE HEAD OF THE BOLT IS ON THE FAR SIDE OF BEAM.

REVISIONS		
rev#	date	description

job no. 4580
date Oct 26 2011
drawn by TC
checked by GDI

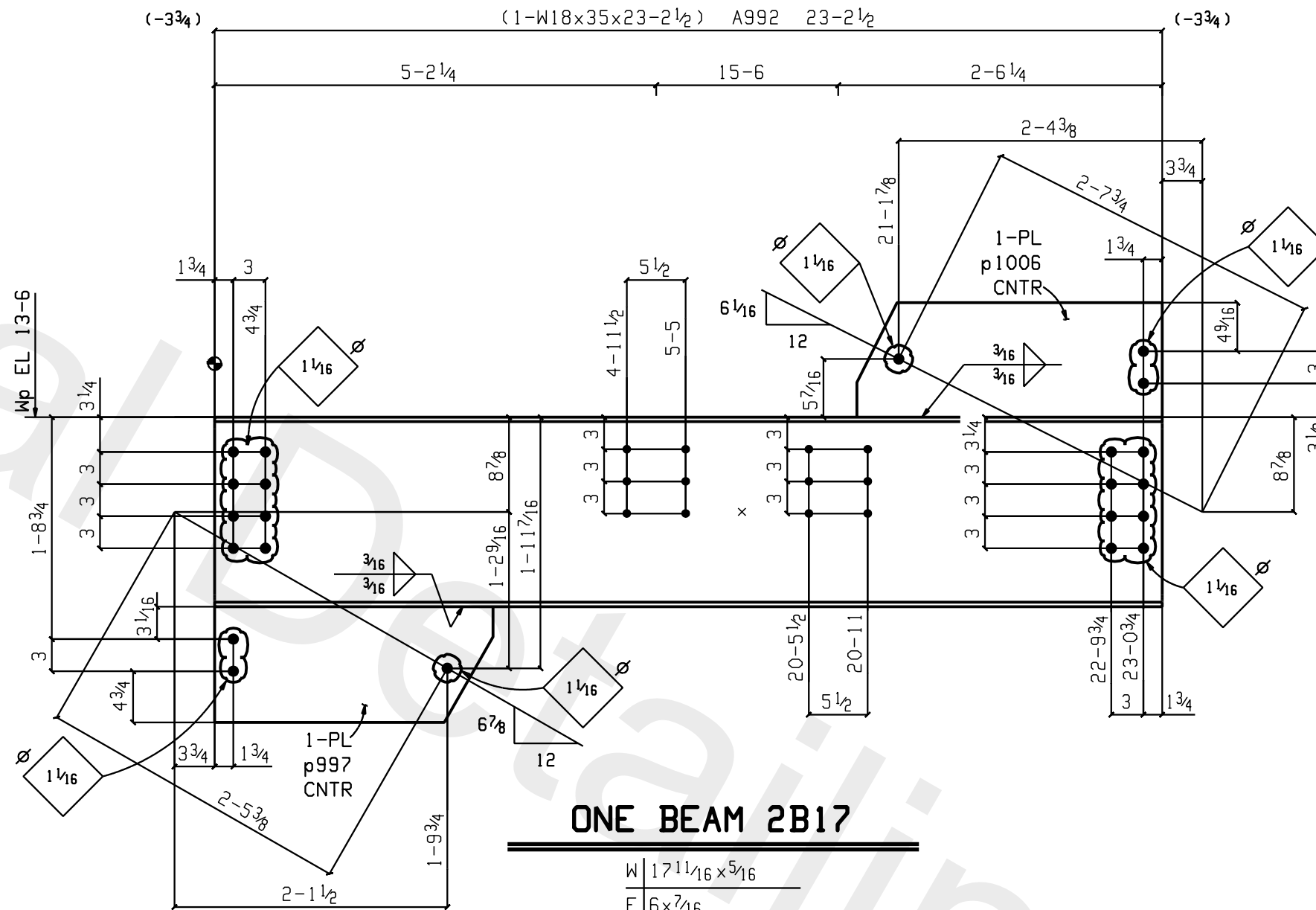
PRINT RECORD		
	APP	DATE
1		8.9.12
2		9.12.12

customer
HARVEY
CONSTRUCTION

project
St. MARY'S
BANK HQ
200 MCGREGOR St
MANCHESTER NH

Jeffords
STEEL AND ENGINEERING COMPANY
P.O. BOX 40-4398 ROUTE #22
PLATTSBURGH, N.Y. 12901
518-561-4061

2B1



ONE BEAM 2B17

W | 17 1/16 x 5 1/16
 F | 6 x 7/16
 K | 1 1/8 x 7/8

BILL OF MATERIAL

LIFT NO.	LIFT QTY.	NO. OF PIECES	PIECE MARK	MATERIAL	LENGTH FT. IN.	REMARKS	WEIGHT TOTAL
2	1	ONE	2B17	BEAM			885
		1	2B17	W18x35	23 2 1/2	A992	812
		1	p997	PL 1/2 x 10 13/16	2 2	A36	40
		1	p1006	PL 3/8 x 10 11/16	2 4 1/2	A36	32
				FIELD BOLTS			
		2		1 Dia A490	0 2 1/2	2HD WASH	
		18		1 Dia A490	0 2 1/4	1HD WASH	
							885

HOLES: 1 3/16" DIA U.N.O.
 SURFACE PREP: SSPC-SP 3
 FINISH: NO PAINT
 ELECTRODES: E70XX-(LOW HYDROGEN)

GENERAL NOTES: ___
 ALL DIMENSIONS FROM END OF MAIN MATERIAL U/W.
 ALL VERTICAL SPACING OF HOLES TO BE 3" U/W.
 ALL COPES TO HAVE 1/4" MINIMUM RADIUS.

CHARGES FOR CORRECTIVE WORK WILL NOT BE HONORED UNLESS PREVIOUS APPROVAL IS OBTAINED FROM JEFFORDS STEEL AND ENGINEERING COMPANY.

MEMBERS ARE TO BE ERECTED SO THAT MARKED END IS IN THE SAME LOCATION AS ON THE ERECTION DRAWING.

ON SHOP BOLTED CLIP ANGLES ON BEAMS: ON PIECE MARK END, INSERT SHOP BOLTS SO THE HEAD OF THE BOLT IS ON THE NEAR SIDE OF BEAM. ON THE NON-PIECE MARK END, INSERT BOLTS SO THE HEAD OF THE BOLT IS ON THE FAR SIDE OF BEAM.

REVISIONS		
rev#	date	description

PRINT RECORD		
1	APP	8.9.12
2	SHOP	9.12.12

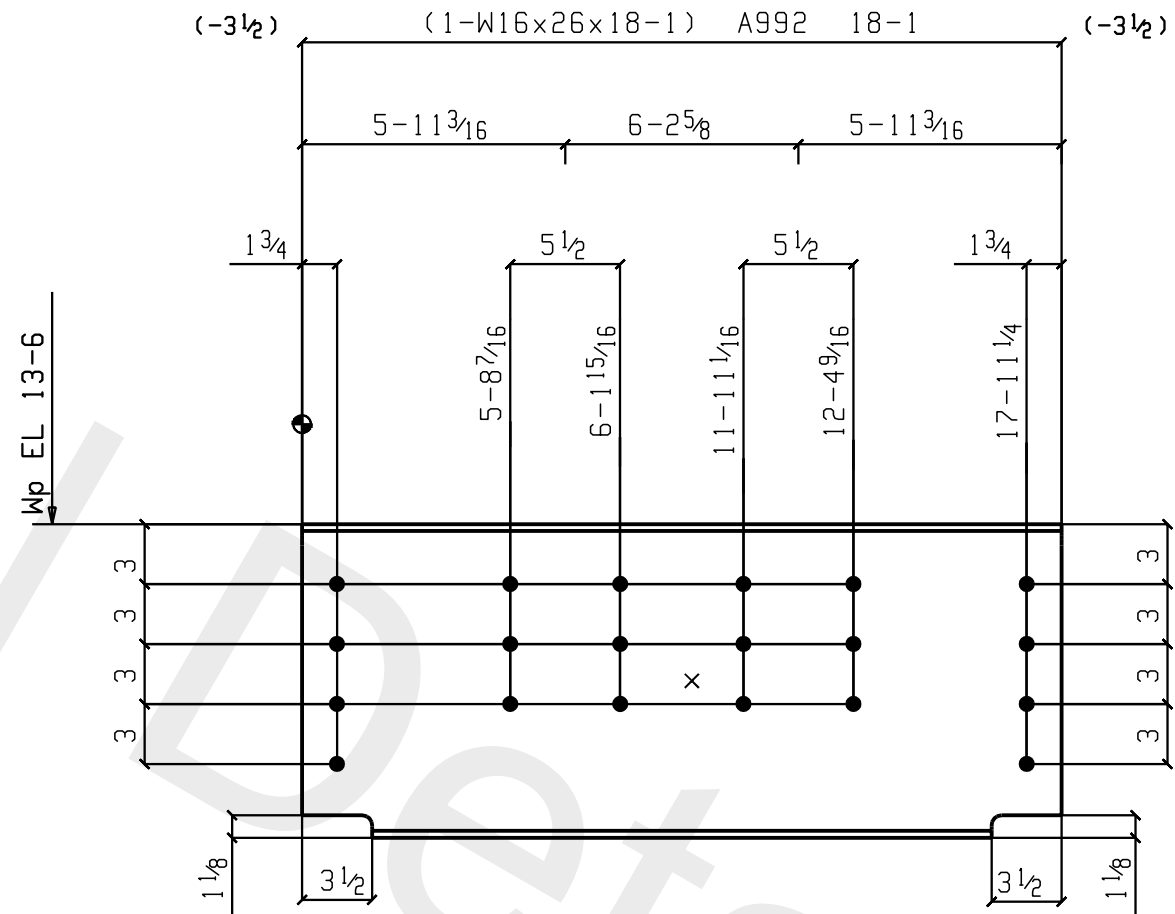
customer
 HARVEY CONSTRUCTION

project
 St. MARY'S BANK HQ
 200 MCGREGOR St
 MANCHESTER NH

DRAWINGS PREPARED BY,
 GLOBAL DETAILING, INC.
 JOB # 12-407

Jeffords
 STEEL AND ENGINEERING COMPANY
 P.O. BOX 40-4398 ROUTE #22
 PLATTSBURGH, N.Y. 12901
 518-561-4061

2B17



DO NOT PAINT
TOP FLANGE

ONE BEAM 2B3

W	15 11/16 x 1/4
F	5 1/2 x 3/8
K	1 1/16 x 13/16

BILL OF MATERIAL

LIFT NO.	LIFT QTY.	NO. OF PIECES	PIECE MARK	MATERIAL	LENGTH FT. IN.	REMARKS	WEIGHT TOTAL
2	1	ONE	2B3	BEAM			470
		1	2B3	W16x26	18	1 A992	470
		8		FIELD BOLTS	0	2 3/4 Dia A325 1HD WASH	470

HOLES: 13/16" DIA U.N.O.
 SURFACE PREP: SSPC-SP 3
 FINISH: 1 S/C GRAY PRIMER
 ELECTRODES: E70XX-(LOW HYDROGEN)

GENERAL NOTES: ___
 ALL DIMENSIONS FROM END OF MAIN MATERIAL U/N.
 ALL VERTICAL SPACING OF HOLES TO BE 3" U/N.
 ALL COPES TO HAVE 1/4" MINIMUM RADIUS.

CHARGES FOR CORRECTIVE WORK WILL NOT BE HONORED UNLESS PREVIOUS APPROVAL IS OBTAINED FROM JEFFORDS STEEL AND ENGINEERING COMPANY.

MEMBERS ARE TO BE ERECTED SO THAT MARKED END IS IN THE SAME LOCATION AS ON THE ERECTION DRAWING.

ON SHOP BOLTED CLIP ANGLES ON BEAMS: ON PIECE MARK END, INSERT SHOP BOLTS SO THE HEAD OF THE BOLT IS ON THE NEAR SIDE OF BEAM. ON THE NON-PIECE MARK END, INSERT BOLTS SO THE HEAD OF THE BOLT IS ON THE FAR SIDE OF BEAM.

REVISIONS		
rev#	date	description

PRINT RECORD		
1	APP	8.9.12
2	SHOP	9.12.12

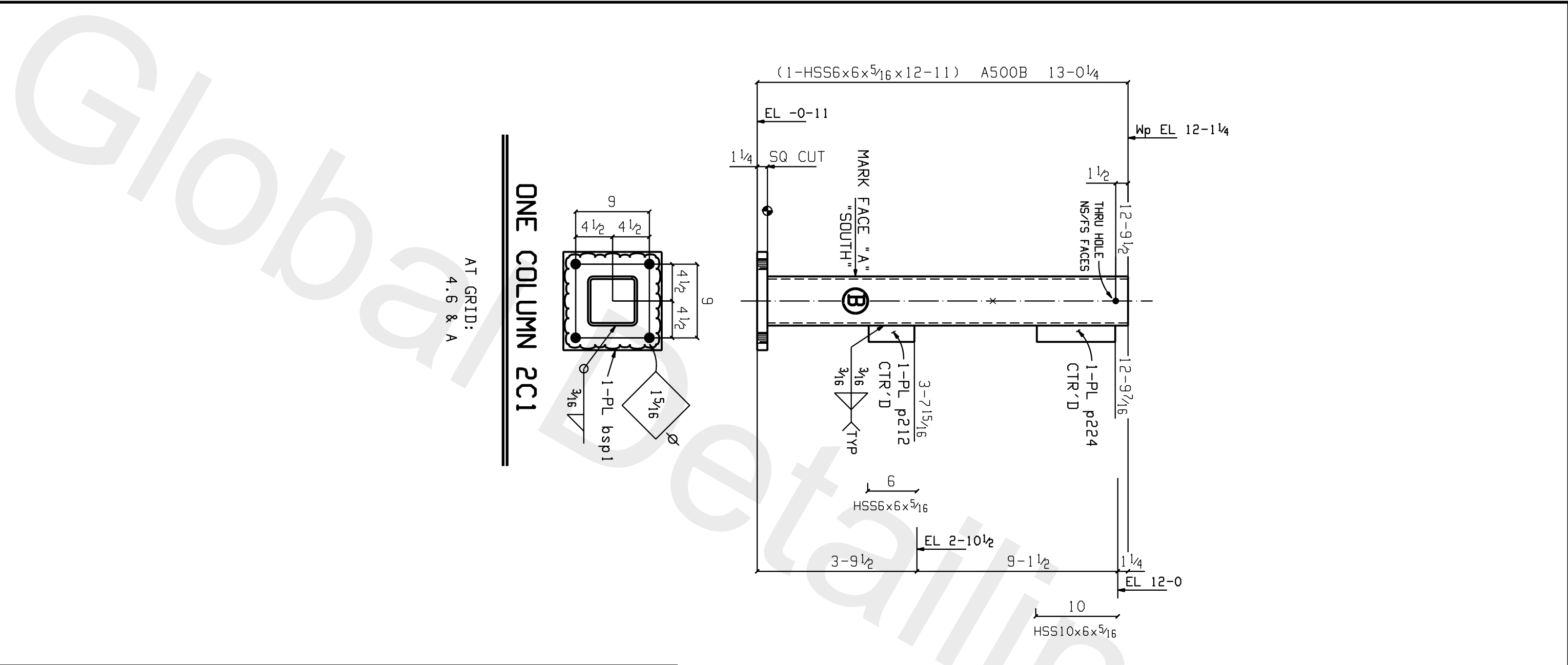
DRAWINGS PREPARED BY,
 GLOBAL DETAILING, INC.
 JOB # 12-407

customer
 HARVEY
 CONSTRUCTION

project
 St. MARY'S
 BANK HQ
 200 MCGREGOR St
 MANCHESTER NH

Jeffords
 STEEL AND ENGINEERING COMPANY
 P.O. BOX 40-4398 ROUTE #22
 PLATTSBURGH, N.Y. 12901
 518-561-4061

2B3



BILL OF MATERIAL							
LIFT NO.	LIFT QTY.	NO. OF PIECES	PIECE MARK	MATERIAL	LENGTH FT. IN.	REMARKS	WEIGHT TOTAL
2	1	ONE	2C1	COLUMN			355
		1	2C1	HSS6x6x ⁵ / ₁₆	12 11	S1E A500B	301
		1	bsp1	PL 1 1/4 x 12	1 0	A36	51
		1	p224	PL 1/4 x 2	0 9 9/16	A36	1
		1	p212	PL 1/4 x 2	0 5 9/16	A36	1
							355

HSS6x6x⁵/₁₆ A500B 13-0 1/4

EL -0-11

1 1/4 SQ CUT

MARK FACE "A" "SOUTH"

1 1/2 THRU HOLE NS/F/S FACES

1 1/2

12-9 1/2

12-9 7/16

1-PL p212 CTR'D

3-7 15/16

1-PL p224 CTR'D

3-9 1/2

EL 2-10 1/2

9-1 1/2

1 1/4

EL 12-0

10

HSS10x6x⁵/₁₆

Wp EL 12-1 1/4

AT GRID: 4.6 & A

ONE COLUMN 2C1

1 5/16

1-PL bsp1

3/16

9

4 1/2 4 1/2

4 1/2 4 1/2

9

(1-HSS6x6x⁵/₁₆x12-11) A500B 13-0 1/4

customer HARVEY CONSTRUCTION

project St. MARY'S BANK HQ
200 McGREGOR St
MANCHESTER NH

REVISONS

rev#	date	description

PRINT RECORD

1	APP	8.9.12	
1	SHOP	9.21.12	

job no. 4580-1001

date Oct 26 2012

drawn by TC

checked by GDI

Holes: 1 3/16" DIA U.N.O.

SURFACE PREP: SSPC-SP 3

FINISH: 1 S/C GRAY PRIMER

ELECTRODES: E70XX-(LOW HYDROGEN)

GENERAL NOTES: ALL DIMENSIONS FROM END OF MAIN MATERIAL U/N. ALL VERTICAL SPACING OF HOLES TO BE 3" U/N. ALL COPES TO HAVE 1/4" MINIMUM RADIUS. CHARGES FOR CORRECTIVE WORK WILL NOT BE HONORED UNLESS PREVIOUS APPROVAL IS OBTAINED FROM JEFFORDS STEEL AND ENGINEERING COMPANY. MEMBERS ARE TO BE ERECTED SO THAT MARKED END IS IN THE SAME LOCATION AS ON THE ERECTION DRAWING. ON SHOP BOLTED CLIP ANGLES ON BEAMS: ON PIECE MARK END, INSERT SHOP BOLTS SO THE HEAD OF THE BOLT IS ON THE NEAR SIDE OF BEAM. ON THE NON-PIECE MARK END, INSERT BOLTS SO THE HEAD OF THE BOLT IS ON THE FAR SIDE OF BEAM.

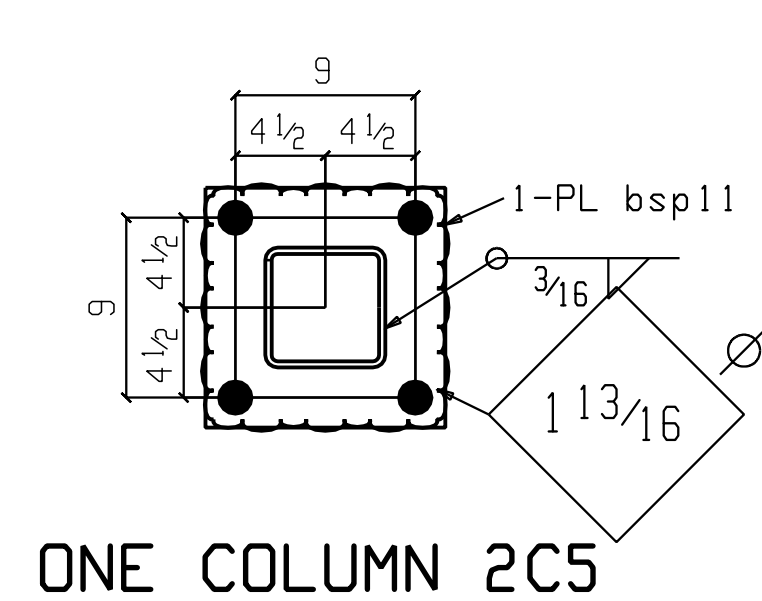
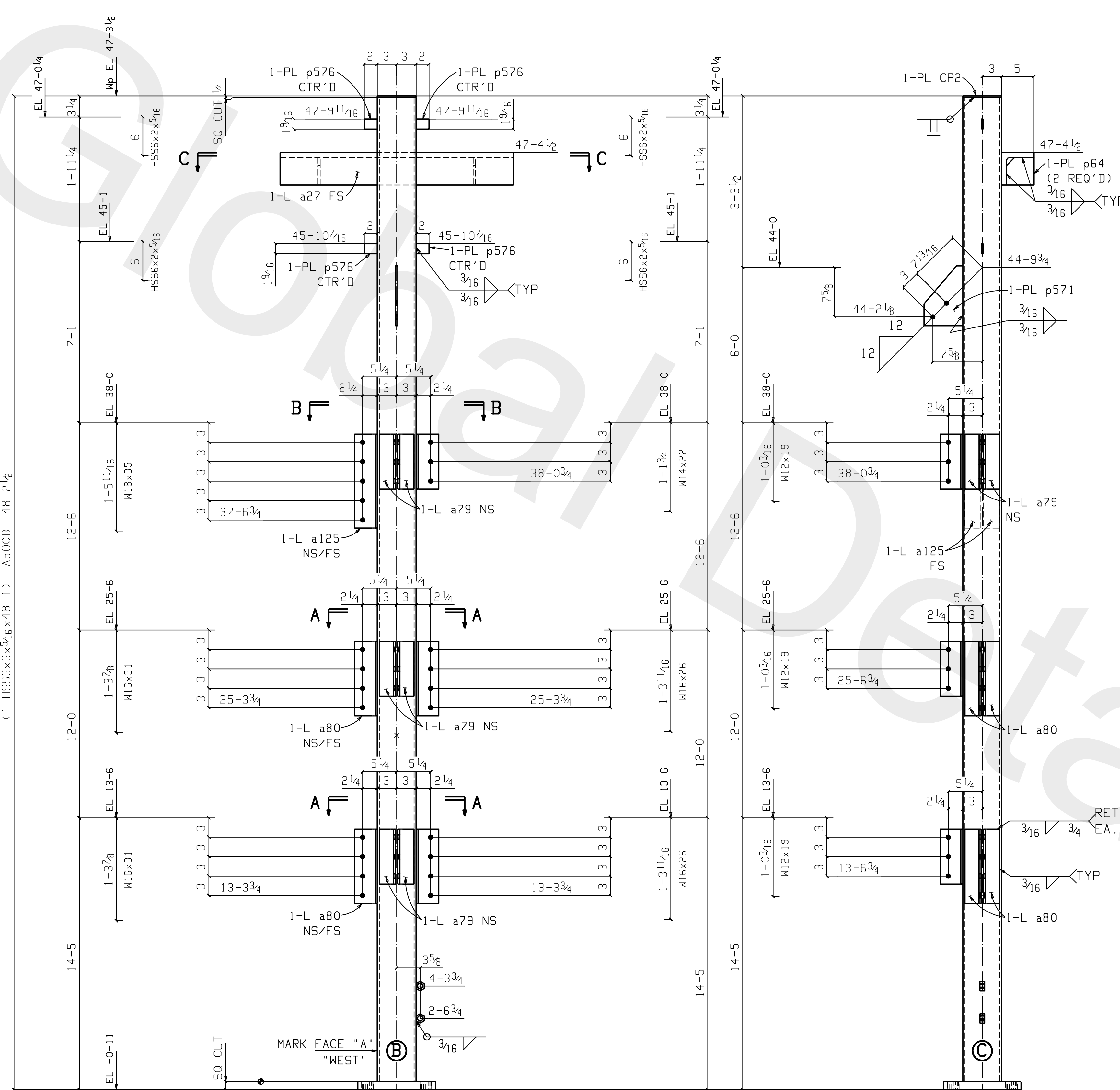
DRAWINGS PREPARED BY, GLOBAL DETAILING, INC. JOB # 12-407

STEEL AND ENGINEERING COMPANY P.O. BOX 40-4398 ROUTE #22 PLATTSBURGH, N.Y. 12901 518-561-4061

Jeffords

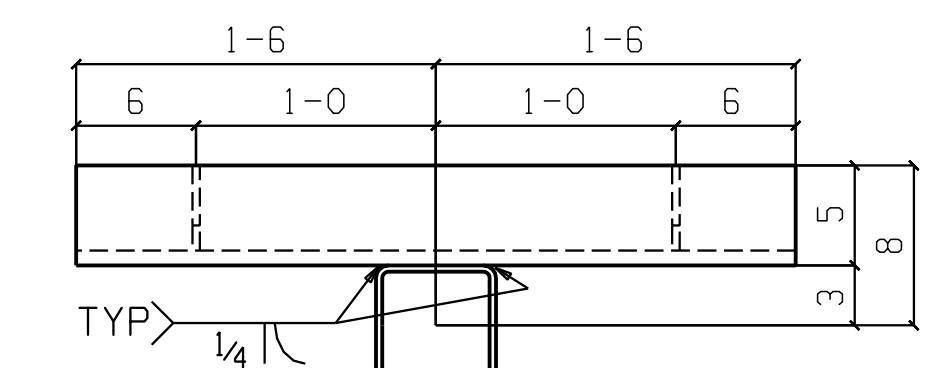
2C1

(1-HSS6x6x5/16x48-1) A500B 48-2 1/2

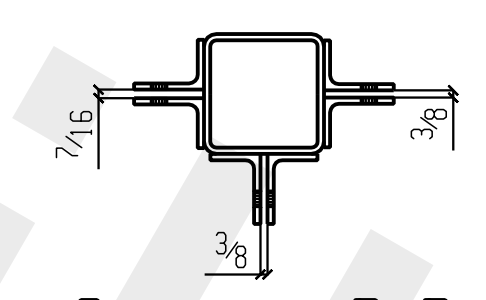


ONE COLUMN 2C5

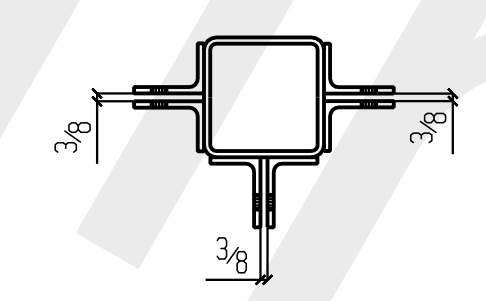
AT GRID:
5 & E



Section C-C
2C5



Section B-B
2C5



Section A-A
2C5

DRAWINGS PREPARED BY,
GLOBAL DETAILING, INC.
JOB # 12-407

BILL OF MATERIAL						
LIFT NO.	LIFT QTY.	NO. OF PIECES	PIECE MARK	MATERIAL	LENGTH FT. IN.	WEIGHT TOTAL
2	1	ONE	2C5	COLUMN		1353
			1	2C5	HSS6x6x5/16	48 1 S2E A500B 1122
			1	a27	L5x5x3/4	3 0 B2E GALV A36 71
			2	a125	L3 1/2x2 1/2x5/8	1 2 1/2 A36 15
			8	a80	L3 1/2x2 1/2x5/8	0 11 1/2 A36 42
			8	a79	L3 1/2x2 1/2x5/8	0 8 1/2 A36 35
			1	bsp11	PL 1 1/4x12	1 0 A36 51
			1	p571	PL 3/8x6	0 9 1/4 A36 6
			2	p54	PL 3/8x4 1/4	0 4 1/4 GALV A36 4
			1	CP2	PL 1/4x6	0 6 A36 3
			4	p576	PL 1/4x1 3/8	0 2 A36 1
			2	3/4 NUT		HWK A563
Total weight :						

HOLES: 13/16" DIA U.N.D.
SURFACE PREP: SSPC-SP 3
FINISH: 1 S/C GRAY PRIMER
ELECTRODES: E70XX-(LOW HYDROGEN)

GENERAL NOTES:
ALL DIMENSIONS FROM END OF MAIN MATERIAL UNLESS NOTED.
ALL VERTICAL SPACING OF HOLES TO BE 3" UNLESS NOTED.
ALL COPES TO HAVE 1/2" MINIMUM RADIUS.
CHARGES FOR CORRECTIVE WORK WILL NOT BE HONORED UNLESS PREVIOUS APPROVAL IS OBTAINED FROM JEFFORDS STEEL AND ENGINEERING COMPANY
MEMBERS ARE TO BE ERECTED SO THAT MARKED END IS IN THE SAME LOCATION AS ON THE E.DWG
ON SHOP BOLTED CLIP ANGLES ON BEAMS: ON PC MARK END, INSERT SHOP BOLTS SO THE HEAD OF THE BOLT IS ON THE NEAR SIDE OF BEAM. IN THE NON-PC MARK END, INSERT BOLTS SO THE HEAD OF THE BOLT IS ON THE FAR SIDE OF BEAM.

print record

APP	DATE	BY
APP	DATE	BY

job no. 4580-1001
date of issue
drawn by
checked by

revisions

rev#	date	description

customer
HARVEY CONSTRUCTION CORP.
BEDFORD, NH

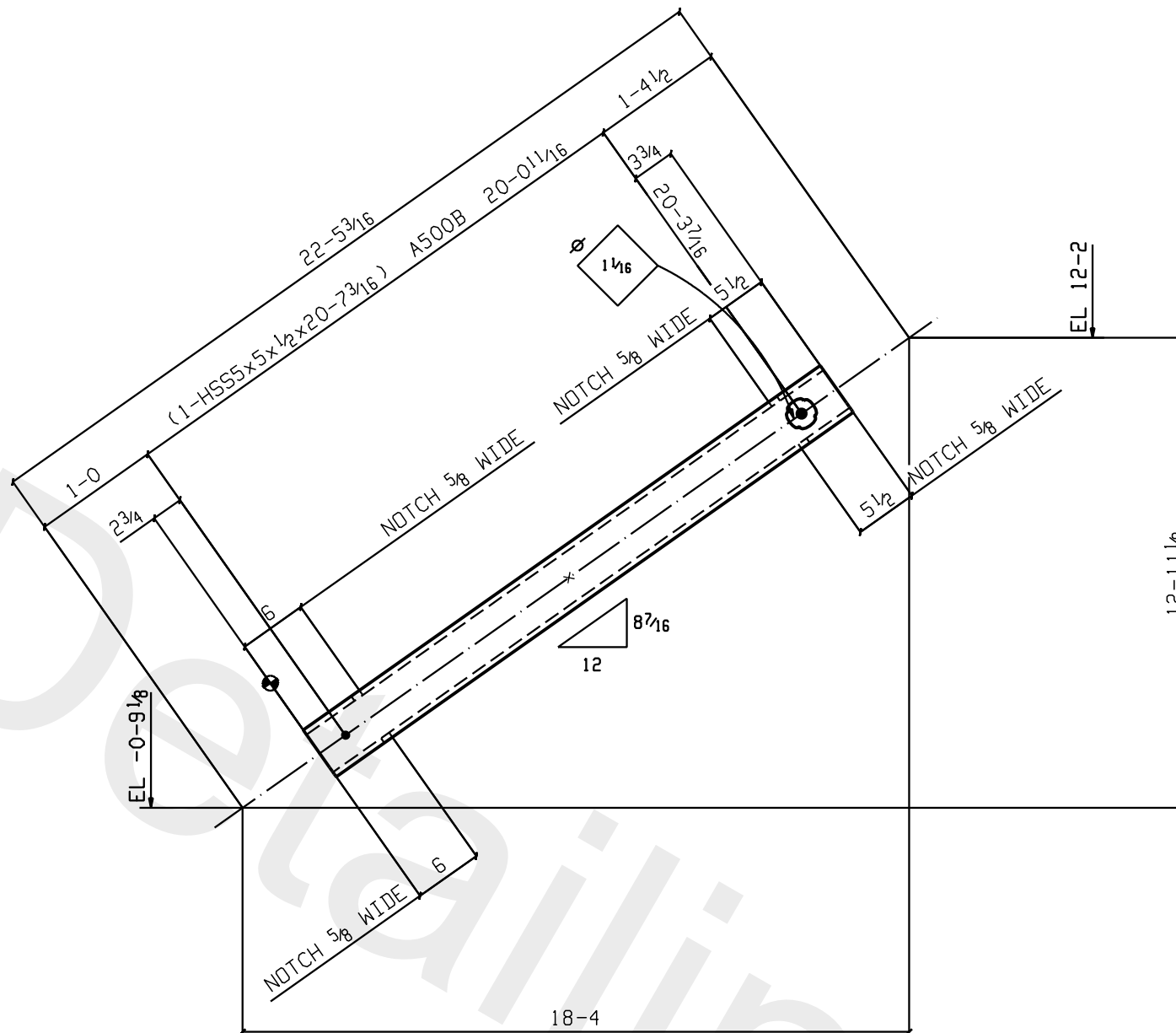
project
ST. MARY'S BANK
200 MCGREGOR STREET
MANCHESTER, NH

sheet
2C5

STEEL AND ENGINEERING COMPANY
P.O. BOX 40-438 ROUTE 422
PLATTSBURGH, N.Y. 12901
518-561-1061

JEFFORDS

Global



BILL OF MATERIAL

LIFT NO.	LIFT QTY.	NO. OF PIECES	PIECE MARK	MATERIAL	LENGTH FT. IN.	REMARKS	WEIGHT TOTAL
2	1	ONE	2VB3	VERTICAL BRACE			586
		1	2VB3	HSS5x5x1/2	20 7 3/16	A500B	586
				FIELD BOLTS			
		1		1 Dia A307	0 6 1/2		
		1		3/4 Dia A307	0 6		
							586

ONE VERTICAL BRACE 2VB3



DRAWINGS PREPARED BY,
GLOBAL DETAILING, INC.
JOB # 12-407

HOLES: 1 3/16" DIA U.N.O.
SURFACE PREP: SSPC-SP 3
FINISH: **NO PAINT**
ELECTRODES: E70XX-(LOW HYDROGEN)

GENERAL NOTES:
ALL DIMENSIONS FROM END OF MAIN MATERIAL U/N.
ALL VERTICAL SPACING OF HOLES TO BE 3" U/N.
ALL COPES TO HAVE 1/4" MINIMUM RADIUS.
CHARGES FOR CORRECTIVE WORK WILL NOT BE HONORED UNLESS PREVIOUS APPROVAL IS OBTAINED FROM JEFFORDS STEEL AND ENGINEERING COMPANY.
MEMBERS ARE TO BE ERRECTED SO THAT MARKED END IS IN THE SAME LOCATION AS ON THE ERECTION DRAWING.
ON SHOP BOLTED CLIP ANGLES ON BEAMS: ON PIECE MARK END, INSERT SHOP BOLTS SO THE HEAD OF THE BOLT IS ON THE NEAR SIDE OF BEAM. ON THE NON-PIECE MARK END, INSERT BOLTS SO THE HEAD OF THE BOLT IS ON THE FAR SIDE OF BEAM.

REVISIONS		
1	9.17.12	ADDED NO PAINT NOTE/TOP FLG

PRINT RECORD		
1	APP	8.9.12
2	SHOP	9.12.12
3	SHOP	9.17.12

job no.	4580
date	Oct 26 2012
drawn by	TC
checked by	GDI

customer
HARVEY
CONSTRUCTION

project
St. MARY'S
BANK HQ
200 MCGREGOR St
MANCHESTER NH

Jeffords
STEEL AND ENGINEERING COMPANY
P.O. BOX 40-4398 ROUTE #22
PLATTSBURGH, N.Y. 12901
518-561-4061

2VB3