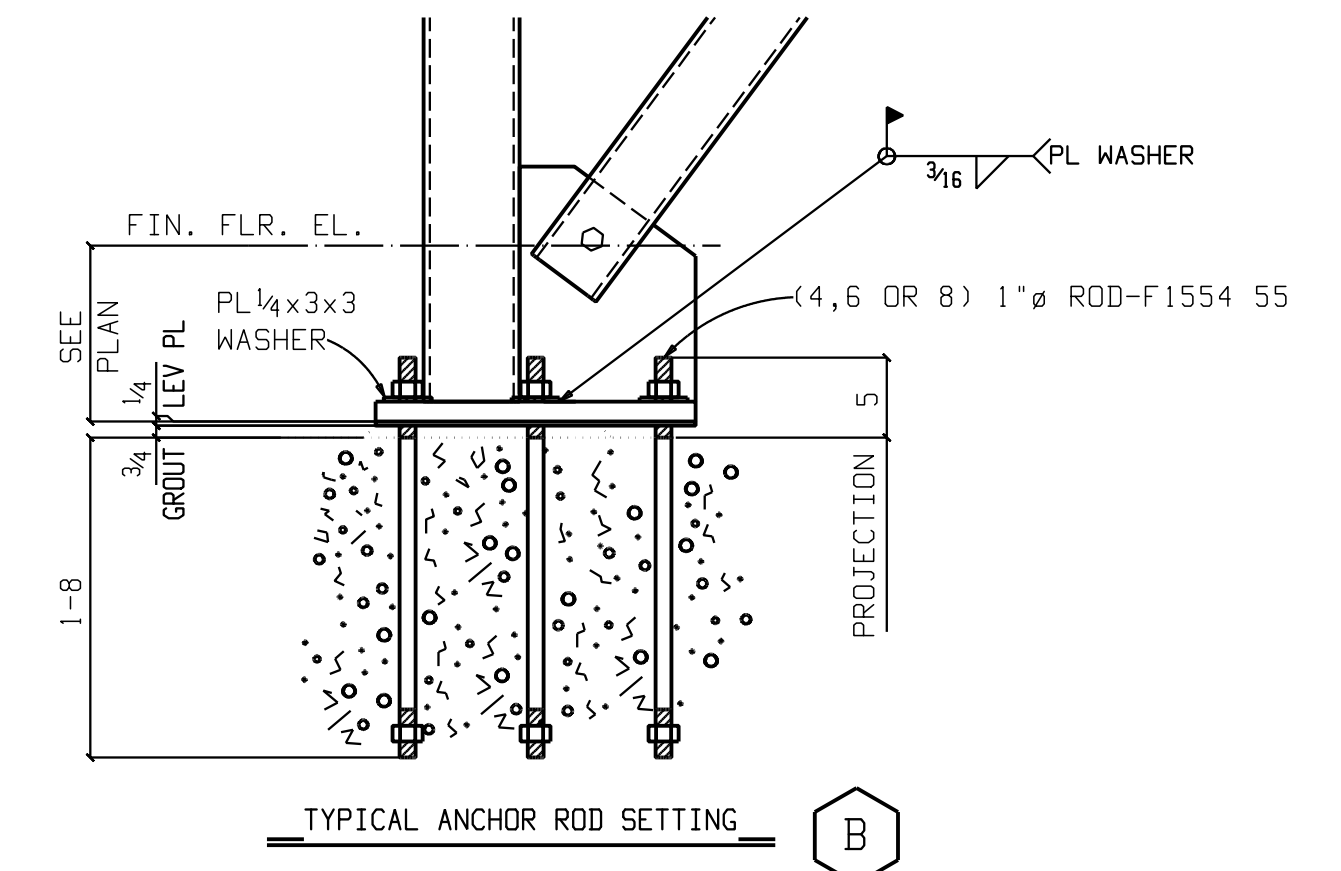
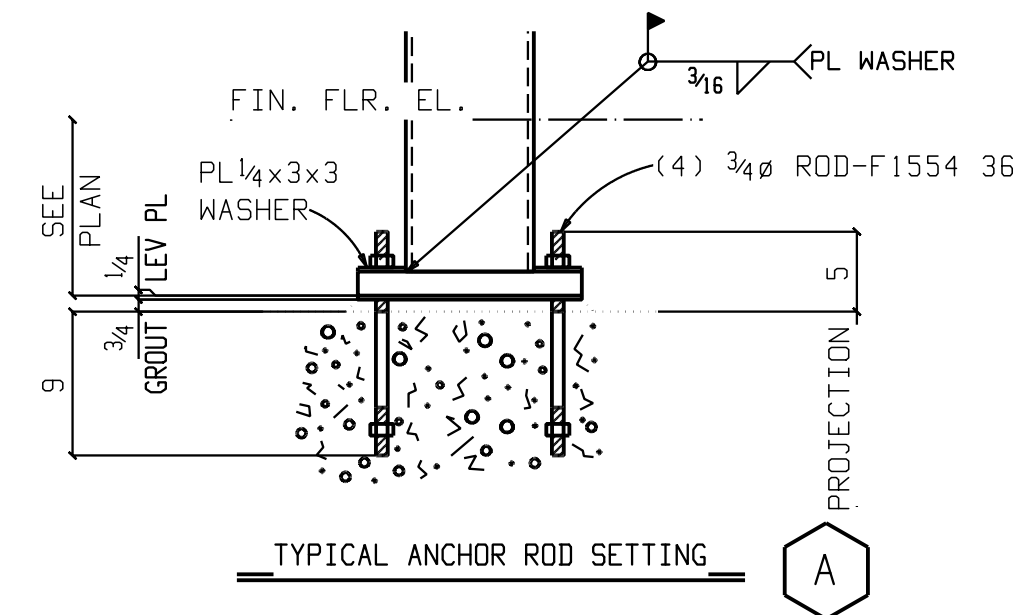


SEE AR2 FOR CONT.



1	APP	7.18.12
2	APP	7.26.12
3	FLD USE	8.9.12

job no. 4580
date 7-12
drawn by TC
checked by GDI

revisions		
rev#	date	description

Jeffords
STEEL AND ENGINEERING COMPANY
P.O. BOX 40-4398 ROUTE #22
PLATTSBURGH, N.Y. 12901
518-561-4061

customer
HARVEY CONSTRUCTION
10 HARVEY RD
BEDFORD NH 03110

project

sheet

AR1

ALL VERIFIES, REQUEST FOR INFORMATION NOT
RESPONDED TO AND/OR DIMENSIONS NOT FURNISHED
WILL PLACE AFFECTED STEEL ON HOLD.


JEFFORDS STEEL AND ENGINEERING ASSUMES NO
RESPONSIBILITY FOR ERRORS RESULTING FROM
CONFLICTS IN CONTRACT DRAWINGS (ARCHITECTURAL/
STRUCTURAL).

GENERAL NOTES:

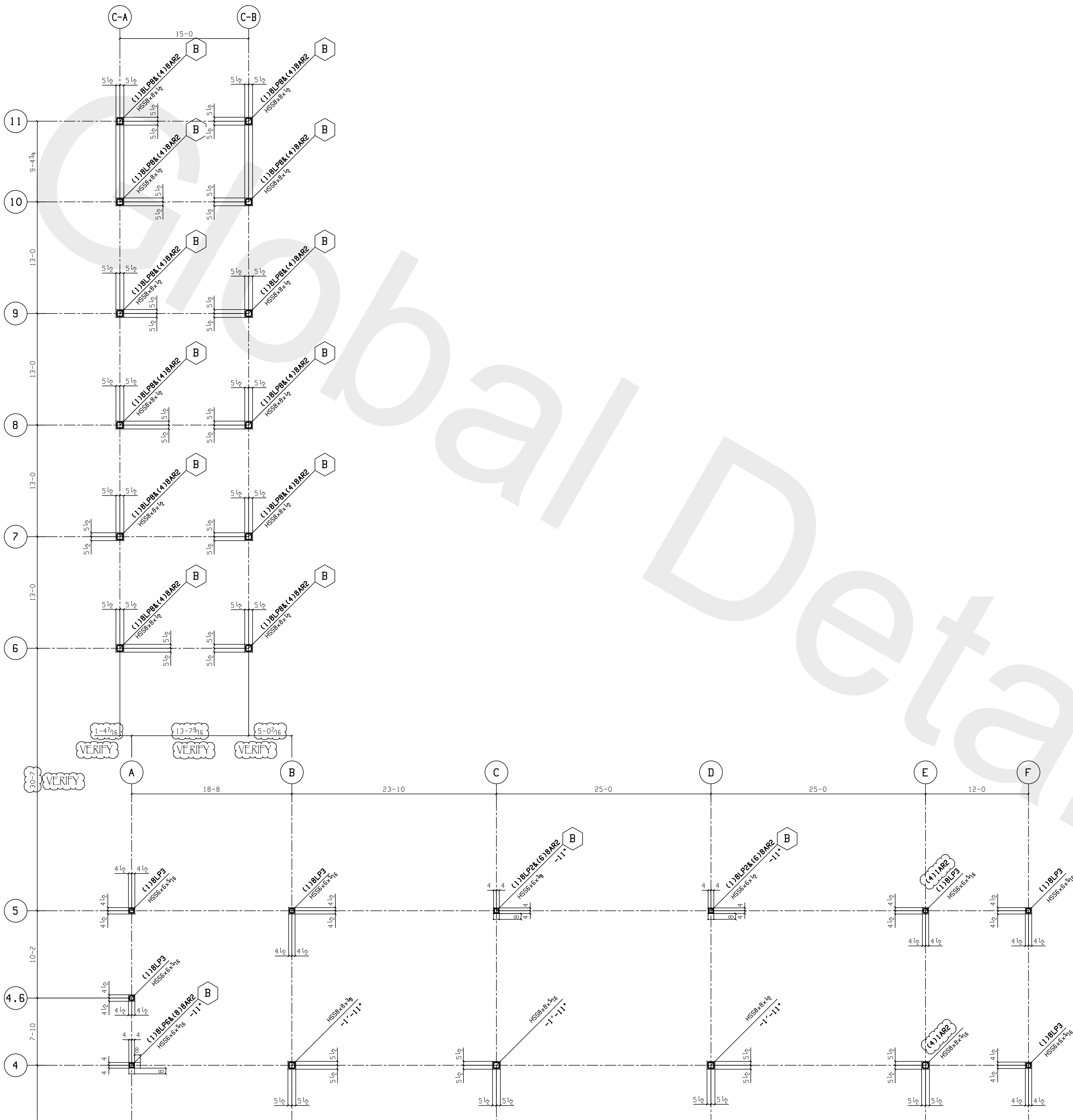
CHARGES FOR CORRECTIVE WORK WILL NOT BE HONORED UNLESS
PREVIOUS APPROVAL IS OBTAINED FROM JEFFORDS STEEL AND
ENGINEERING COMPANY.

MEMBERS ARE TO BE ERECTED SO THAT MARKED END IS IN THE SAME LOCATION AS ON THE ERECTION DRAWING.

 DRAWINGS PREPARED BY,
GLOBAL DETAILING, INC.
JOB # 12-407



DRAWINGS PREPARED BY,
GLOBAL DETAILING, INC.
JOB # 12-407



SEE AR1 FOR CONT.

ALL VERIFIES, REQUEST FOR INFORMATION NOT RESPONDED TO AND/OR DIMENSIONS NOT FURNISHED WILL PLACE AFFECTED STEEL ON HOLD.

JEFFORDS STEEL AND ENGINEERING ASSUMES NO RESPONSIBILITY FOR ERRORS RESULTING FROM CONFLICTS IN CONTRACT DRAWINGS (ARCHITECTURAL/STRUCTURAL).

GENERAL NOTES:

CHARGES FOR CORRECTIVE WORK WILL NOT BE HONORED UNLESS PREVIOUS APPROVAL IS OBTAINED FROM JEFFORDS STEEL AND ENGINEERING COMPANY.

MEMBERS ARE TO BE ERECTED SO THAT MARKED END IS IN THE SAME LOCATION AS ON THE ERECTION DRAWING.

DRAWINGS PREPARED BY,
GLOBAL DETAILING, INC.
JOB # 12-407

print record			
1	APP	7.18.12	
2	APP	7.26.12	
3	FLD USE	8.9.12	

JOB NO. 4980	DATE 7-12	DRAWN BY TC	CHECKED BY GILL
--------------	-----------	-------------	-----------------

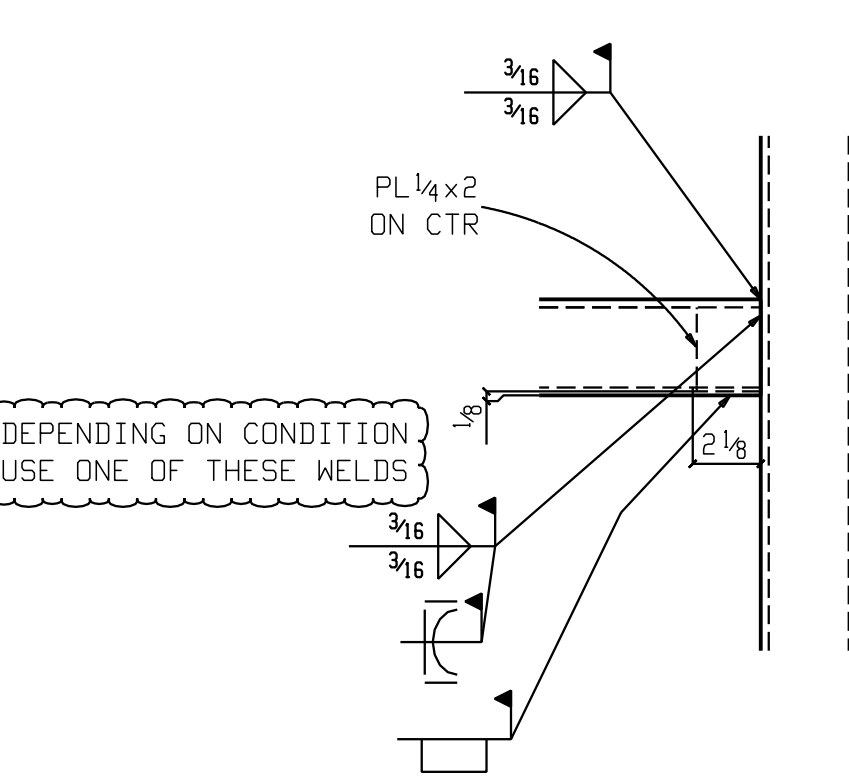
revisions	
rev#	description

Jeffords
STEEL AND ENGINEERING COMPANY
P.O. BOX 404-988 ROUTE #22
PITTSBURGH, N.Y. 15201
510-561-4061

CUSTOMER
HARVEY CONSTRUCTION
10 HARVEY RD
BEDFORD NH 03110


PROJECT
St. MARY'S BANK HQ
200 MCGREGOR STREET
MANCHESTER NH 03102

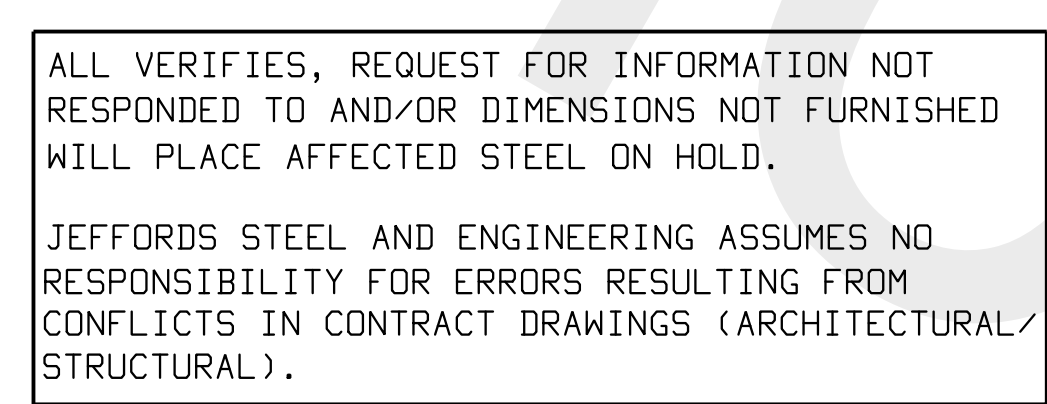
SHEET
AR2



TYP 4
PLCS

W

 DRAWINGS PREPARED BY,
GLOBAL DETAILING, INC.
JOB # 12-407



GENERAL NOTES:

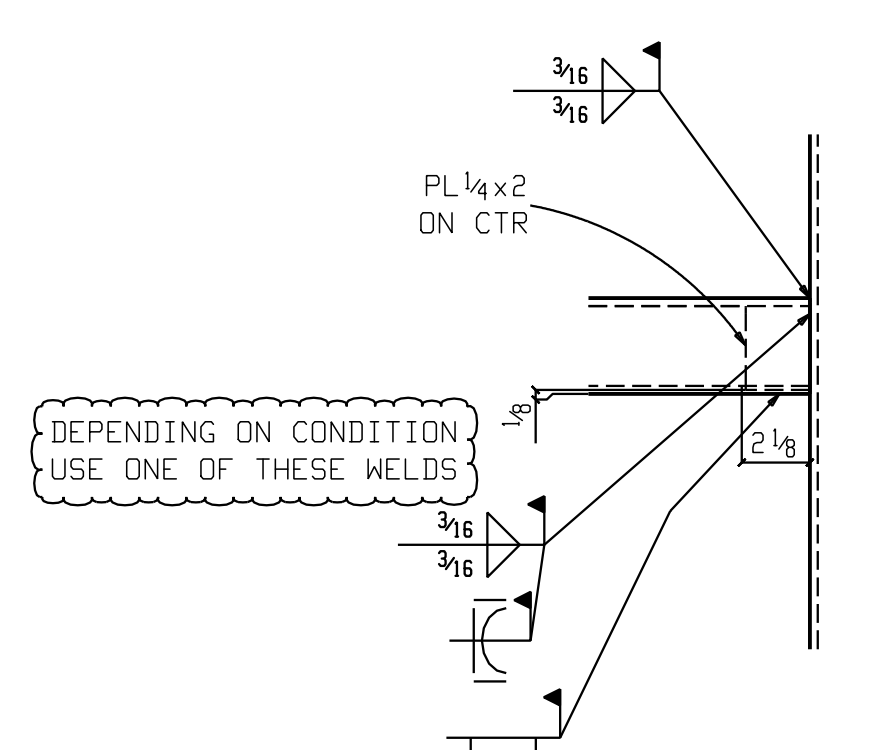
CHARGES FOR CORRECTIVE WORK WILL NOT BE HONORED UNLESS PREVIOUS APPROVAL IS OBTAINED FROM JEFFORDS STEEL AND ENGINEERING COMPANY.

MEMBERS ARE TO BE ERECTED SO THAT MARKED END IS IN THE SAME LOCATION AS ON THE ERECTION DRAWING.

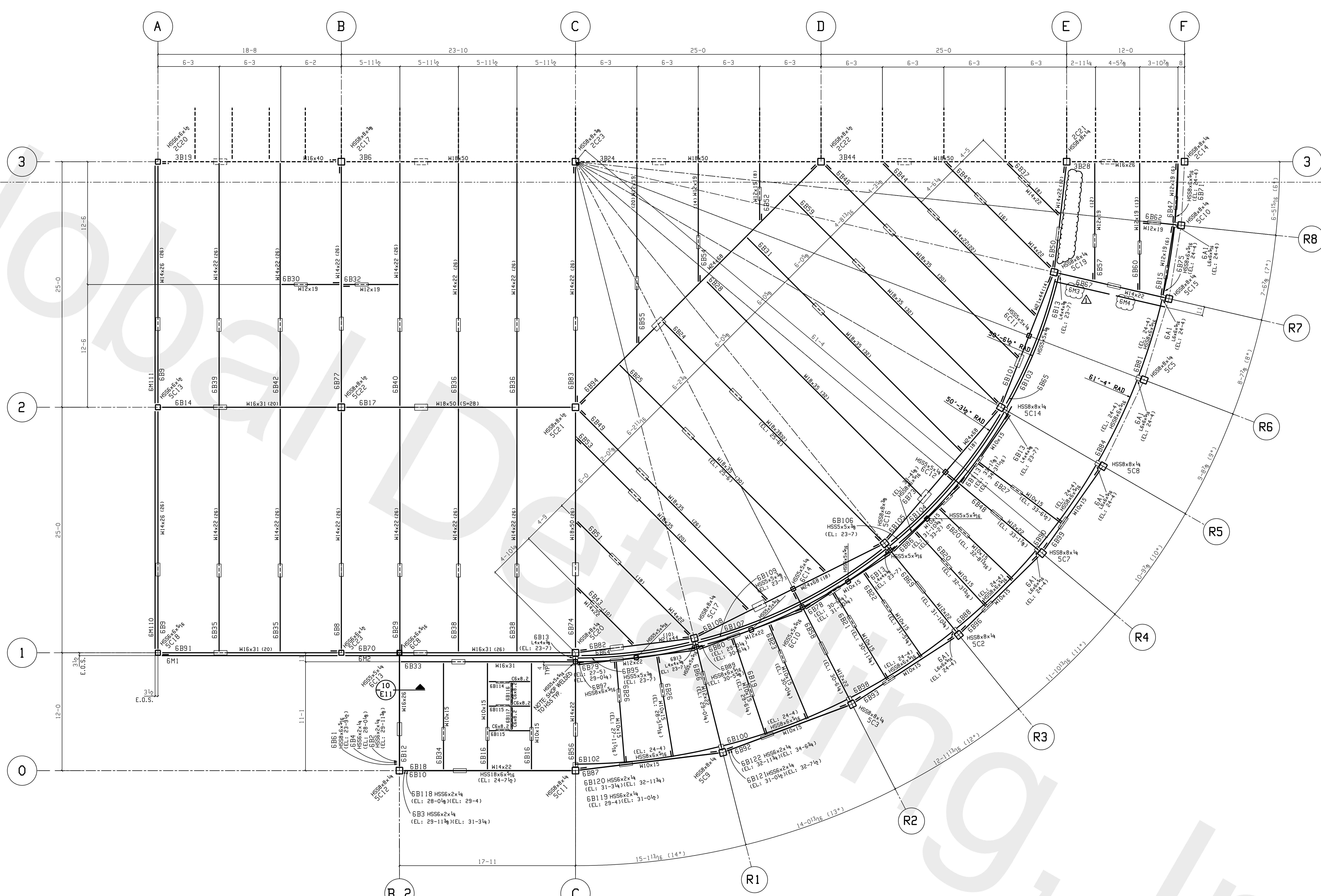
sheet

E4

MATCH LINE SEQ. 3 (E3)
MATCH LINE SEQ. 6 (E9)



TYP SECTION AT TUBE TO TUBE CONNECTION



SEQ 6 3rd FLOOR PLAN

- 1) FINISH 3RD FLOOR EL. 26'-0"
- 2) ALL TOP OF STEEL EL. 25'-6" UNO.
- 3) (V) REPRESENTS STUD COUNT
- 4) E.O.S. INDICATES EDGE OF SLAB

GENERAL NOTES:

CHARGES FOR CORRECTIVE WORK WILL NOT BE HONORED UNLESS PREVIOUS APPROVAL IS OBTAINED FROM JEFFORDS STEEL AND ENGINEERING COMPANY.

MEMBERS ARE TO BE ERECTED SO THAT MARKED END IS IN THE SAME LOCATION AS ON THE ERECTION DRAWING.

DRAWINGS PREPARED BY:
GLOBAL DETAILING, INC.
JOB # 12-407

print record
1 APP 3.4.12
2 FIELD 10.11.12

job no. 4580-1001
date 8-12
drawn by TC
checked by GHI

revisions
rev# date description
1 10.24.12 ADDED EDGE OF SLAB PLATE
JEFFORDS
STEEL AND ENGINEERING COMPANY
P.O. BOX 60488 Rte #22
Pittsburgh, N.Y. 15201
510-551-4061

Customer
HARVEY CONSTRUCTION
10 HARVEY RD
BEDFORD NH 03110

Project
St. Mary's Bank HQ
200 MCGREGOR STREET
MANCHESTER NH 03102

sheet
E9